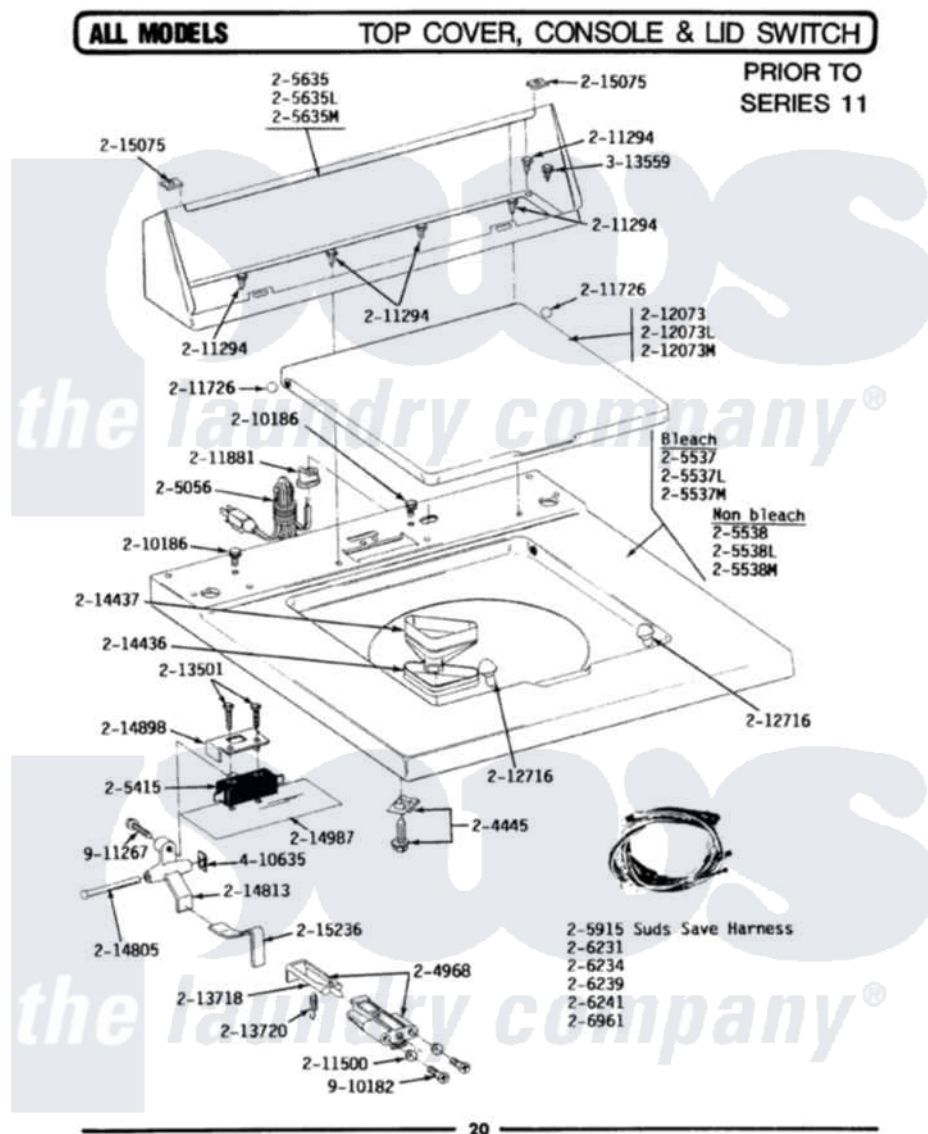


# Maytag LA512 06 - TOP COVER\CONSOLE\LID SWITCH



Maytag Residential Maytag LA512 Washer Parts Parts Diagram 06 - TOP COVER\CONSOLE\LID SWITCH  
 Click on the part number to view part

Item	Original Part Number	Replaced By	Status	Part Description
1	<a href="#">Y201808</a>			Converter
2	<a href="#">204445</a>			Screw And Fastener Assembly
3	<a href="#">204968</a>			Plunger And Bracket Assembly--W
4	205056	<a href="#">204590</a>		Cord, Power
5	205415	<a href="#">279347</a>		Switch-Lid
7	<a href="#">205537L</a>			Top Cover-Almond---NA
11	205635L		Not Available	CONSOLE (ALM)
13	<a href="#">205997</a>			Non-Bleach Conversion Kit
16	<a href="#">206231</a>			Wire Harness
19	210186	<a href="#">3370225</a>		Screw
20	211294	<a href="#">90767</a>		Screw, 8A X 3/8 HeX Washer Head Tapping
21	<a href="#">211500</a>			Washer, Bracket To Top Cover
22	<a href="#">211726</a>			Hinge, Ball Lid
23	211737	<a href="#">248562</a>		Terminal
24	<a href="#">211881</a>			Grommet, Cord Part Not Used-

24	<a href="#">211001</a>		Gas Models Only
26	212073L	Not Available	LID-ALMOND
27	<a href="#">212716</a>		Bumper, Lid
28	<a href="#">213501</a>		Screw, No.6-20 X 1-1/8 Inch
29	<a href="#">213718</a>		Plunger, Lid Switch
30	<a href="#">213720</a>		Spring, Lid Switch
31	<a href="#">214436</a>		Gasket
32	<a href="#">214805</a>		Pin For Unbalance Lever
33	214813	Not Available	LEVER FOR LID SWITCH
34	<a href="#">214898</a>		Cover For Lid Switch
35	<a href="#">214987</a>		Moisture Barrier For Switch
36	<a href="#">215075</a>		Fastener, Control Panel To Console
37	215236	<a href="#">214804</a>	Unbalance Lever
39	<a href="#">215578</a>		Bleach Inlet Almond
41	<a href="#">215580</a>		Cup, Bleach
42	<a href="#">301548</a>		Clamp, Ground Wire
43	<a href="#">311155</a>		Ground Wire And Clamp
44	<a href="#">Y312140</a>		Wire Connector
45	<a href="#">Y313559</a>		Screw
46	<a href="#">410635</a>		Fastener
47	910182	<a href="#">25-7809</a>	Screw, No.6-20 1/2 Flthd Torx
48	<a href="#">911267</a>		Screw, Pump Cover

