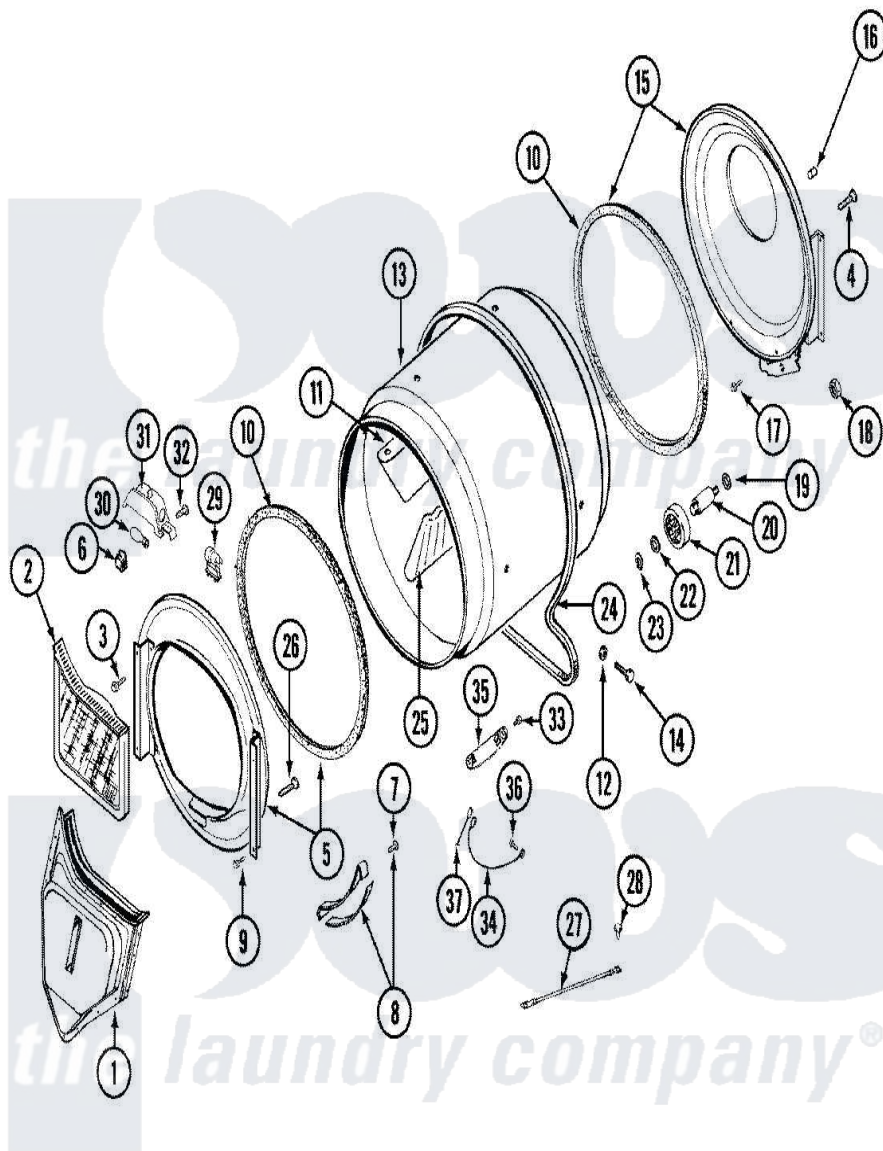


# Maytag LDE9804AEE 08 - TUMBLER



Maytag [Residential Maytag LDE9804AEE Dryer Parts](#) Parts Diagram 08 - TUMBLER  
 Click on the part number to view part

Item	Original Part Number	Replaced By	Status	Part Description
1	<a href="#">33001016</a>			Outlet Duct Assembly
2	33001171	<a href="#">33002970</a>		Lint Filte
3	313764		Not Available	SCREW
4	<a href="#">Y313561</a>			Screw----NA
5	<a href="#">33001423</a>			Front Assembly, Tumbler
6	<a href="#">Y310376</a>			Clip, Door Switch Harness
7	<a href="#">210720</a>			Rivet, Bearing To Tumbler Frmt
8	<a href="#">306508</a>			Tumbler Bearing Kit ----W
9	Y310632	<a href="#">1163839</a>		Screw
10	<a href="#">314820</a>			Seal, Tumbler
11	<a href="#">33001012</a>			Baffle
12	<a href="#">314158</a>			Washer, Baffle To Tumbler
13	33001108		Not Available	DRYER TUMBLER, W/O BAFFLES
14	<a href="#">Y310759</a>			Screw, Tumbler Baffles
15	<a href="#">33001178</a>			Back, Tumbler
16	313915	<a href="#">31-3915</a>		Tech Sheet

17	Y310632	<a href="#">1163839</a>	Screw
18	312538	<a href="#">33001443</a>	Nut, Hex
19	Y313347	<a href="#">312535</a>	Washer, Vault Mounting Brk.
20	Y312948	<a href="#">6-3129480</a>	Shaft- Tumbler
21	Y303373	<a href="#">12001541</a>	Drum Roller/Washer Assembly--W
22	<a href="#">312535</a>		Washer, Vault Mounting Brk.
23	410233	<a href="#">9703438</a>	Ring-Retrn
24	<a href="#">Y312959</a>		Poly "V" Belt For Tumbler
25	<a href="#">33001004</a>		Baffle, Tall
26	Y314110	<a href="#">33002917</a>	Screw, No.10-16
27	<a href="#">901220</a>		Ground Wire
28	910343	<a href="#">488234</a>	Screw 8-32 X 1/4
29	307097	<a href="#">33001496</a>	Lamp- Hold
30	Y307100	<a href="#">67001316</a>	Bulb, Light
31	314955	<a href="#">33001496</a>	Lamp- Hold
32	<a href="#">214872</a>		Palnut, End Cap Note: Nut, Lamp Holder
33	Y251119	<a href="#">3177991</a>	Screw
34	<a href="#">Y303711</a>		Sensor Ground Wire
35	Y303389	<a href="#">304997</a>	Sensor Assembly With Screws
36	211294	<a href="#">90767</a>	Screw, 8A X 3/8 HeX Washer Head Tapping
37	<a href="#">Y312658</a>		Receptacle, Sensor Ground Wire

