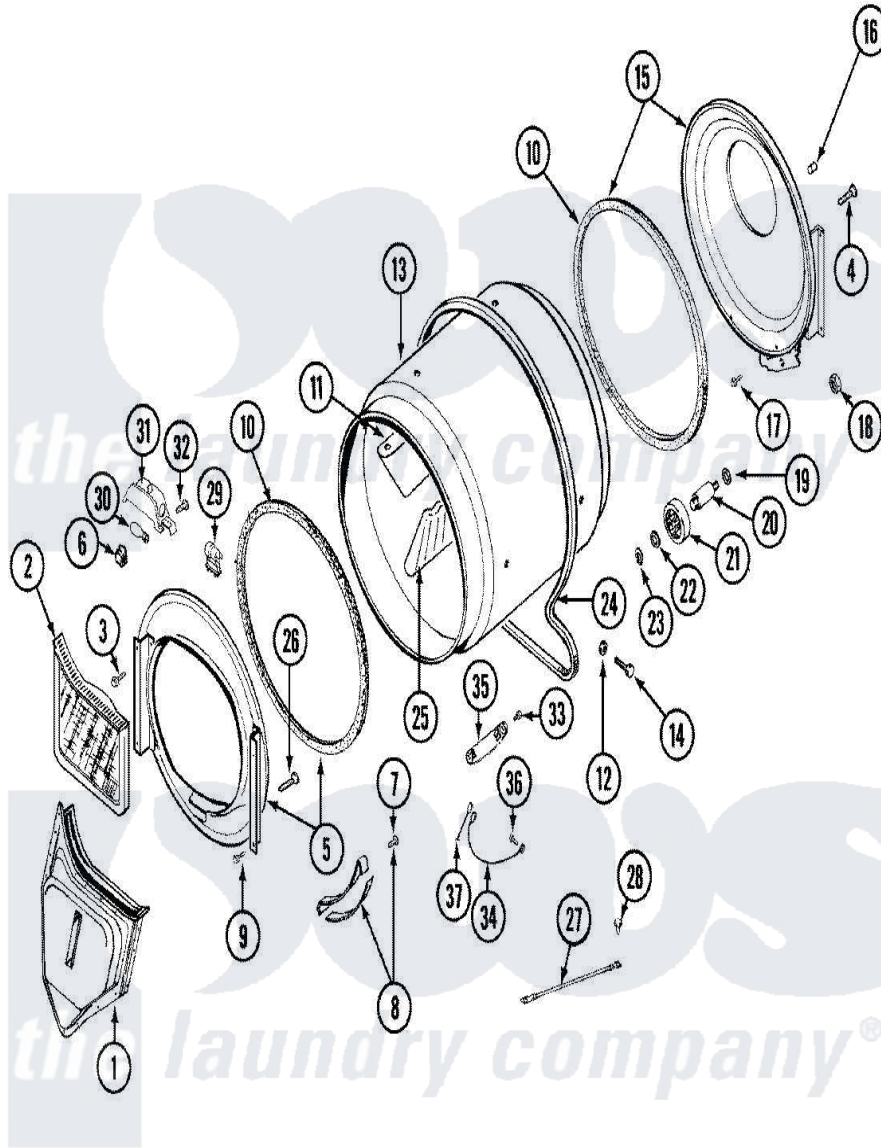


Maytag LDG9334AAM 07 - TUMBLER (LDE9334ACM & LDG9334AAM)



Maytag [Residential Maytag LDG9334AAM Dryer Parts](#) Parts Diagram 07 - TUMBLER (LDE9334ACM & LDG9334AAM)
 Click on the part number to view part

| Item | Original Part Number | Replaced By | Status | Part Description |
|------|--------------------------|--------------------------|---------------|--------------------------------|
| 1 | 33001016 | | | Outlet Duct Assembly |
| 2 | 33001171 | 33002970 | | Lint Filte |
| 3 | 313764 | | Not Available | SCREW |
| 4 | Y313561 | | | Screw----NA |
| 5 | 33001423 | | | Front Assembly, Tumbler |
| 6 | Y310376 | | | Clip, Door Switch Harness |
| 7 | 210720 | | | Rivet, Bearing To Tumbler Frmt |
| 8 | 306508 | | | Tumbler Bearing Kit ----W |
| 9 | Y310632 | 1163839 | | Screw |
| 10 | 314820 | | | Seal, Tumbler |
| 11 | 33001012 | | | Baffle |
| 12 | 314158 | | | Washer, Baffle To Tumbler |
| 13 | 33001108 | | Not Available | DRYER TUMBLER, W/O BAFLES |
| 14 | Y310759 | | | Screw, Tumbler Baffles |
| 15 | 33001178 | | | Back, Tumbler |
| 16 | 313915 | 31-3915 | | Tech Sheet |

| | | | |
|----|--------------------------|---------------------------|--|
| 17 | Y310632 | 1163839 | Screw |
| 18 | 312538 | 33001443 | Nut, Hex |
| 19 | Y313347 | 312535 | Washer, Vault Mounting Brk. |
| 20 | Y312948 | 6-3129480 | Shaft- Tumbler |
| 21 | Y303373 | 12001541 | Drum Roller/Washer Assembly--W |
| 22 | 312535 | | Washer, Vault Mounting Brk. |
| 23 | 410233 | 9703438 | Ring-Retrn |
| 24 | Y312959 | | Poly "V" Belt For Tumbler |
| 25 | 33001004 | | Baffle, Tall |
| 26 | Y314110 | 33002917 | Screw, No.10-16 |
| 27 | 901220 | | Ground Wire |
| 28 | 910343 | 488234 | Screw 8-32 X 1/4 |
| 29 | 307097 | 33001496 | Lamp- Hold |
| 30 | Y307100 | 67001316 | Bulb, Light |
| 31 | 314955 | 33001496 | Lamp- Hold |
| 32 | 214872 | | Palnut, End Cap Note: Nut, Lamp Holder |
| 33 | Y251119 | 3177991 | Screw |
| 34 | Y303711 | | Sensor Ground Wire |
| 35 | Y303389 | 304997 | Sensor Assembly With Screws |
| 36 | 211294 | 90767 | Screw, 8A X 3/8 HeX Washer Head Tapping |
| 37 | Y312658 | | Receptacle, Sensor Ground Wire |

