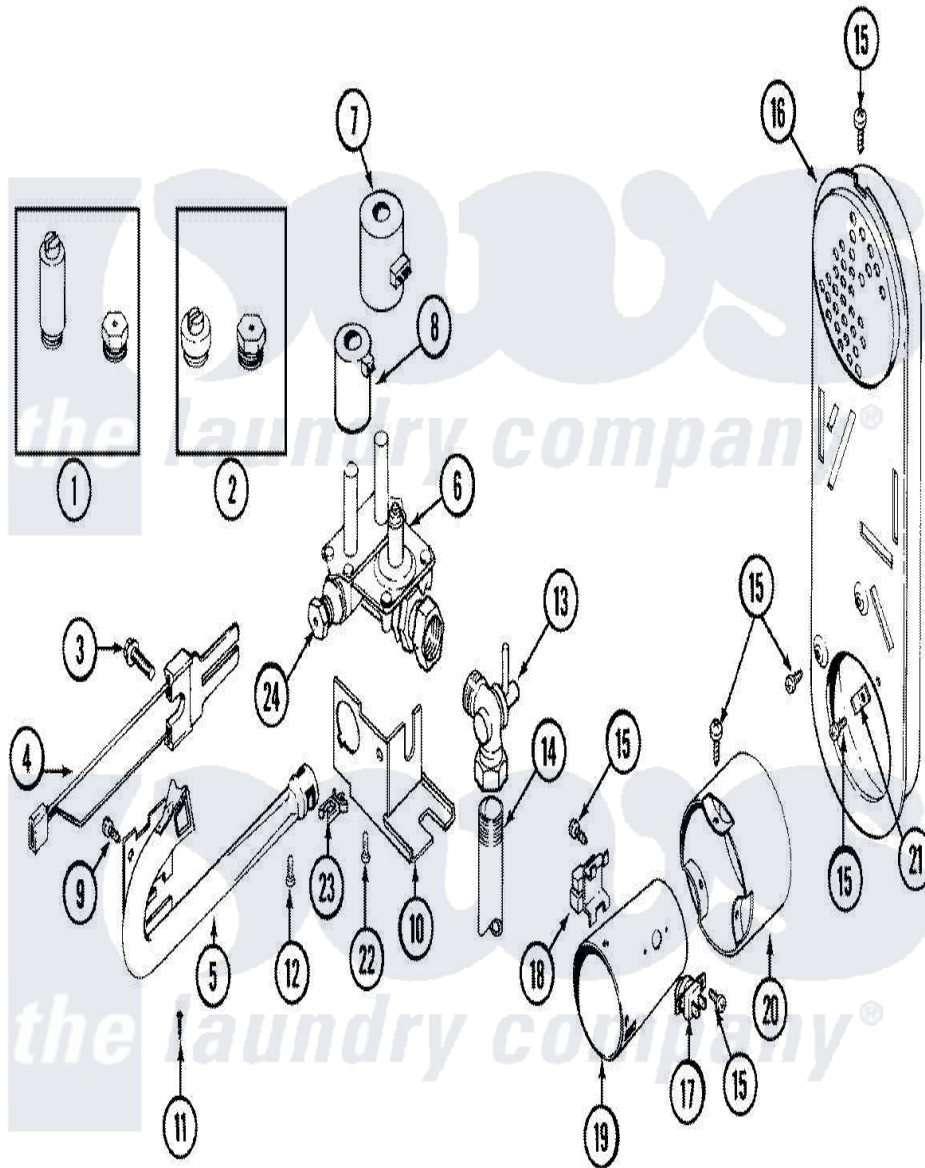


# Maytag LSG7804ABM 08 - GAS VALVE (LSG7804AAM & ABM)



Maytag [Residential Maytag LSG7804ABM Stacked Washer and Dryer Parts](#) Parts Diagram 08 - GAS VALVE (LSG7804AAM & ABM)

[Click on the part number to view part](#)

Item	Original Part Number	Replaced By	Status	Part Description
1	<a href="#">306205</a>			Conversion Kit-Nat. To LPG
2	306206		Not Available	CONVERSION KIT-LPG TO NAT.
3	<a href="#">304971</a>			Screw Note: Screw, Igniter
4	304970	<a href="#">4391996</a>		Ignitor
5	<a href="#">33001310</a>			Burner Assembly
6	<a href="#">306084</a>			Valve, Gas
7	<a href="#">306106</a>			Coil, Holding And Booster-W
8	306105	<a href="#">694540</a>		Coil, 60 Hz
9	212276	<a href="#">W10116760</a>		Screw
10	<a href="#">314508</a>			Bracket For Gas Valve
11	<a href="#">Y313559</a>			Screw
12	314568	<a href="#">Y313559</a>		Screw
"	314082	<a href="#">90767</a>		Screw, 8A X 3/8 HeX Washer Head Tapping
13	<a href="#">306086</a>			Angle Shut Off For Gas Valve

14	33001311		Not Available	PIPE
15	211294	<a href="#">90767</a>		Screw, 8A X 3/8 HeX Washer Head Tapping
16	<a href="#">Y303369</a>			Inlet Duct Assembly
17	<a href="#">303395</a>			Thermostat, Hi-Limit
18	Y303377	<a href="#">338906</a>		Radiant, Sensor
19	<a href="#">33001312</a>			Cone, Combustion
20	<a href="#">314509</a>			Combustion Cone Extension
21	<a href="#">Y312890</a>			Retainer, Heater Chamber
22	212276	<a href="#">W10116760</a>		Screw
23	315471	<a href="#">22003298</a>		Retainer, Wire
24	311640		Not Available	ORIFICE FOR MAIN BURNER
"	<a href="#">314603</a>			Main Burner Orifice-NAT
"	<a href="#">311641</a>			Orifice For Main Burner

*the laundry company*<sup>®</sup>

*the laundry company*<sup>®</sup>

*the laundry company*<sup>®</sup>