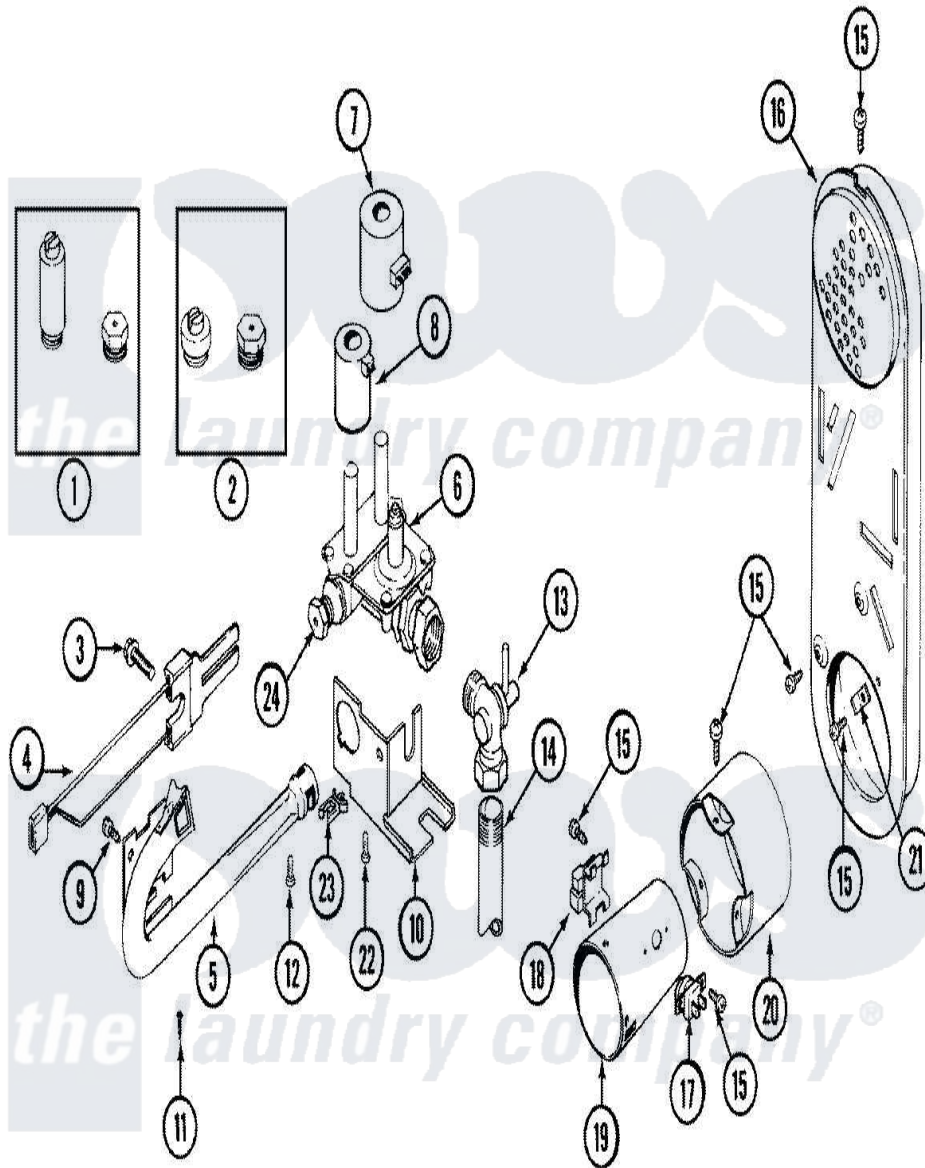


Maytag LSG9904AAE 09 - GAS VALVE



Maytag [Residential Maytag LSG9904AAE Stacked Washer and Dryer Parts](#) Parts Diagram 09 - GAS VALVE
 Click on the part number to view part

Item	Original Part Number	Replaced By	Status	Part Description
1	306205			Conversion Kit-Nat. To LPG
2	306206		Not Available	CONVERSION KIT-LPG TO NAT.
3	304971			Screw Note: Screw, Igniter
4	304970	4391996		Ignitor
5	33001310			Burner Assembly
6	306084			Valve, Gas
7	306106			Coil, Holding And Booster-W
8	306105	694540		Coil, 60 Hz
9	212276	W10116760		Screw
10	314508			Bracket For Gas Valve
11	Y313559			Screw
12	314568	Y313559		Screw
"	314082	90767		Screw, 8A X 3/8 HeX Washer Head Tapping
13	306086			Angle Shut Off For Gas Valve
14	33001311		Not Available	PIPE

15	211294	90767	Screw, 8A X 3/8 HeX Washer Head Tapping
16	Y303369		Inlet Duct Assembly
17	303395		Thermostat, Hi-Limit
18	Y303377	338906	Radiant, Sensor
19	33001312		Cone, Combustion
20	314509		Combustion Cone Extension
21	Y312890		Retainer, Heater Chamber
22	212276	W10116760	Screw
23	315471	22003298	Retainer, Wire
24	311640	Not Available	ORIFICE FOR MAIN BURNER
"	314603		Main Burner Orifice-NAT
"	311641		Orifice For Main Burner

the laundry company[®]

the laundry company[®]

the laundry company[®]