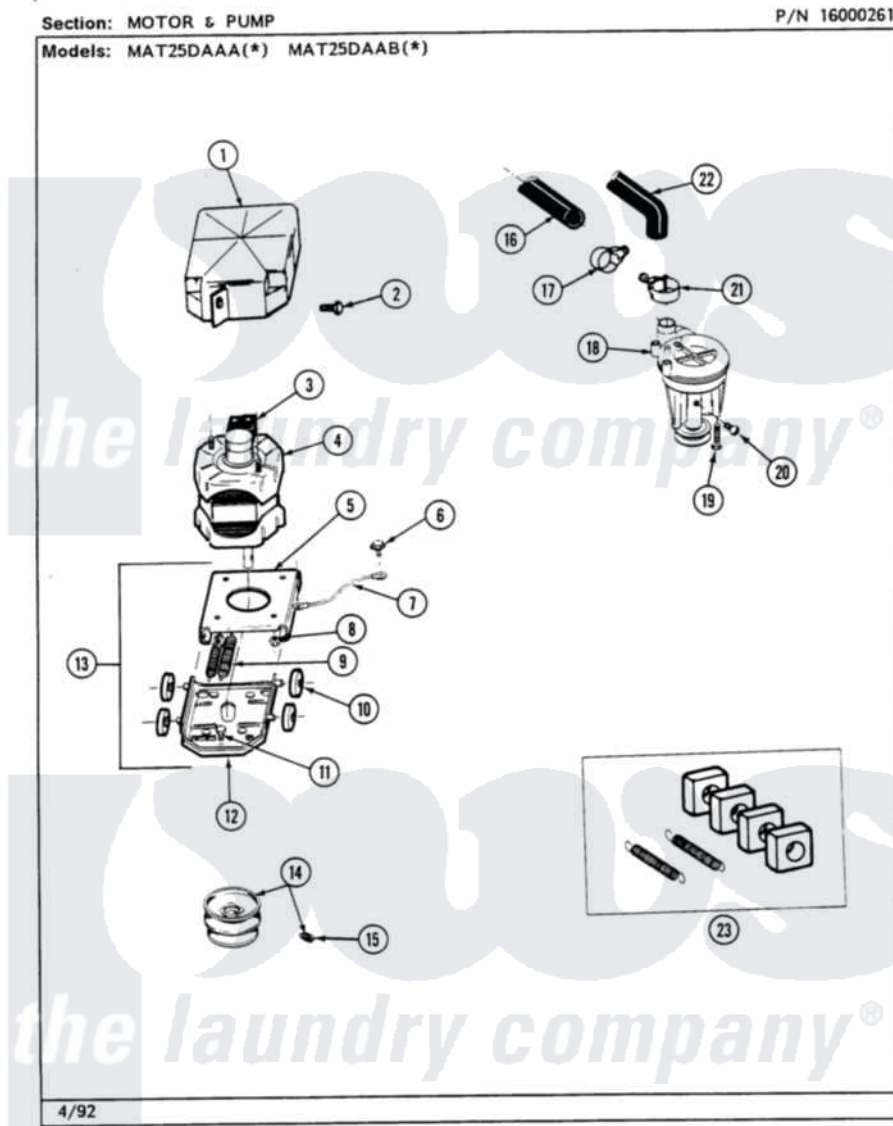


Maytag MAT26PCABL 09 - MOTOR & PUMP



Maytag [Residential Maytag MAT26PCABL Washer Parts](#) Parts Diagram 09 - MOTOR & PUMP
 Click on the part number to view part

| Item | Original Part Number | Replaced By | Status | Part Description |
|------|------------------------|--------------------------|---------------|---|
| 001 | 215098 | | | Shield, Motor |
| 002 | 213121 | 3400111 | | Screw, 12-14 X 5/8 |
| 003 | 205132 | | Not Available | SWITCH, MOTOR EXTERNAL START No.201664-14,205463-4 & 201800-4 |
| " | 205133 | | Not Available | (PROD. IDNo. 2-1664-8 & 2-5463) |
| " | 206505 | | Not Available | PROD. No.201664-15, & No.205463-3. |
| " | NLA | | Not Available | SWITCH, MOTOR EXTERNAL START |
| 004 | 201805 | 12002351 | | Motor-Drve |
| 005 | 214956 | | | Motor Mount Assembly |
| 006 | 210186 | 3370225 | | Screw |
| 007 | 901220 | | | Ground Wire |
| 008 | Y311426 | 3400029 | | Nut, Adapter Plate |
| 009 | 202718 | | | Springs, Tension |
| 010 | Y204998 | 205000 | | Roller And Spring Kit 4+Spr |

| | | | |
|-----|-------------------------|---------------------------|------------------------------------|
| 011 | Y313561 | | Screw---NA |
| 012 | 205908 | | Motor Mount Assembly |
| 013 | 205999 | | Motor Mount Assembly |
| 014 | 200816 | 6-2008160 | Pulley- MO |
| 015 | Y053241 | | Set Screw, Motor Pulley |
| 016 | 215057 | 211704 | Hose, Drain |
| 017 | 200461 | 285655 | Clamp, Hose |
| 018 | 202203 | 6-2022030 | Pump As Pa |
| 019 | 211880 | | Screw, HeX Head No.10 X 1/2 Inc |
| 020 | Y015408 | 22003235 | Screw, Bearing Insert |
| 021 | 202574 | 3367052 | Clamp, Hose |
| 022 | Y212989 | | Hose, Outer Tub To Pump |
| 023 | 205000 | | Roller And Spring Kit 4+Spr |

the laundry company[®]

Howes
the laundry company[®]

Howes
the laundry company[®]