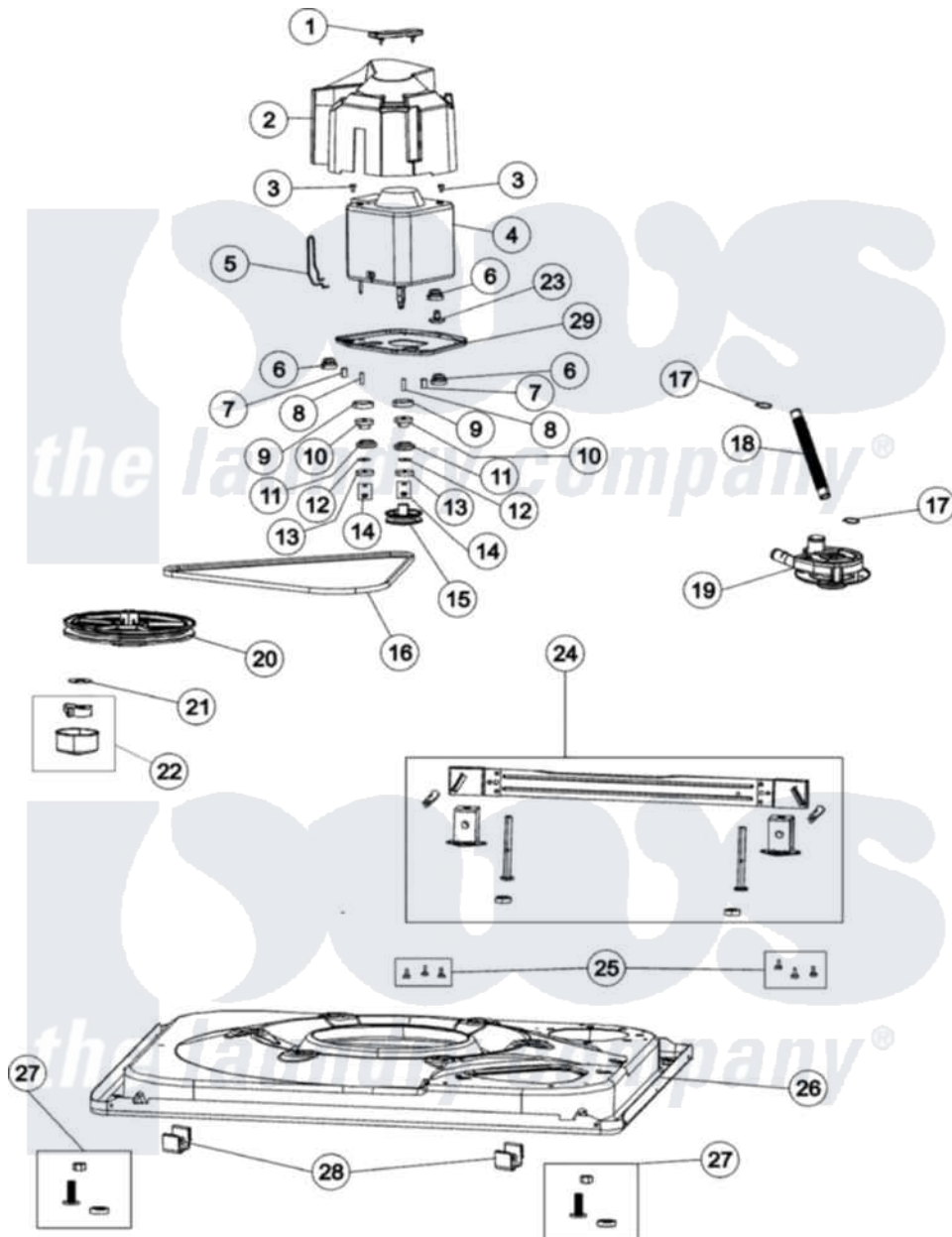


# Maytag MAVT546EWW 01 - BASE & MOTOR



Maytag [Residential Maytag MAVT546EWW Washer Parts](#) Parts Diagram 01 - BASE & MOTOR  
 Click on the part number to view part

Item	Original Part Number	Replaced By	Status	Part Description
1	<a href="#">35-2065</a>			Pad, Motor Plate
2	<a href="#">22002721</a>			Shield, Motor
3	25-7733	<a href="#">681414</a>		Screw, 10AB X 1/2
4	<a href="#">21001950</a>			MoTor, 2SP 1/2hp 120V/60Hz Hi-Tor
5	21001110	<a href="#">22004376</a>		Spring, Motor Pivot
6	<a href="#">35-3646</a>			Isolator, Motor Plate
7	<a href="#">25-7831</a>			Spacer, Mounting
8	<a href="#">25-7830</a>			Spacer
9	<a href="#">35-3570</a>			Washer, Motor Pivot
10	<a href="#">33-9946</a>			Isolator, Motor
11	<a href="#">35-3571</a>			Slide, Motor Pivot
12	<a href="#">25-7047</a>			Washer, Flat
13	<a href="#">33-9967</a>			Washer, Motor Isolator
14	21002009	<a href="#">Y707702</a>		Locknut
15	22004297	<a href="#">21001950</a>		MoTor, 2SP 1/2hp 120V/60Hz Hi-Tor

16	<a href="#">21352320</a>		Belt, Drive
17	21002254	<a href="#">285655</a>	Clamp, Hose
"	25-6068	<a href="#">285655</a>	Clamp, Hose
18	<a href="#">21001915</a>		Hose, Tub To Pump
19	21001873	<a href="#">35-6780</a>	Pump-Water
20	21001733	<a href="#">12002213</a>	Thrust Bearing Kit
21	<a href="#">35-2132</a>		Washer, 1.25ODX.530IDX.032
22	<a href="#">12002213</a>		Thrust Bearing Kit
23	<a href="#">21001486</a>		Foot Slide, Isolator
24	<a href="#">21002221</a>		Stabilizer Bar Kit
25	25-7828	<a href="#">489483</a>	Screw 10-32 X 1/2
26	21001893	<a href="#">12002701</a>	Base Kit
27	<a href="#">25001119</a>		Foot And Pad Assembly
28	<a href="#">53-0120</a>		Clip, Front Panel
29	21001366	<a href="#">21001783</a>	Plate And Screw Assembly

