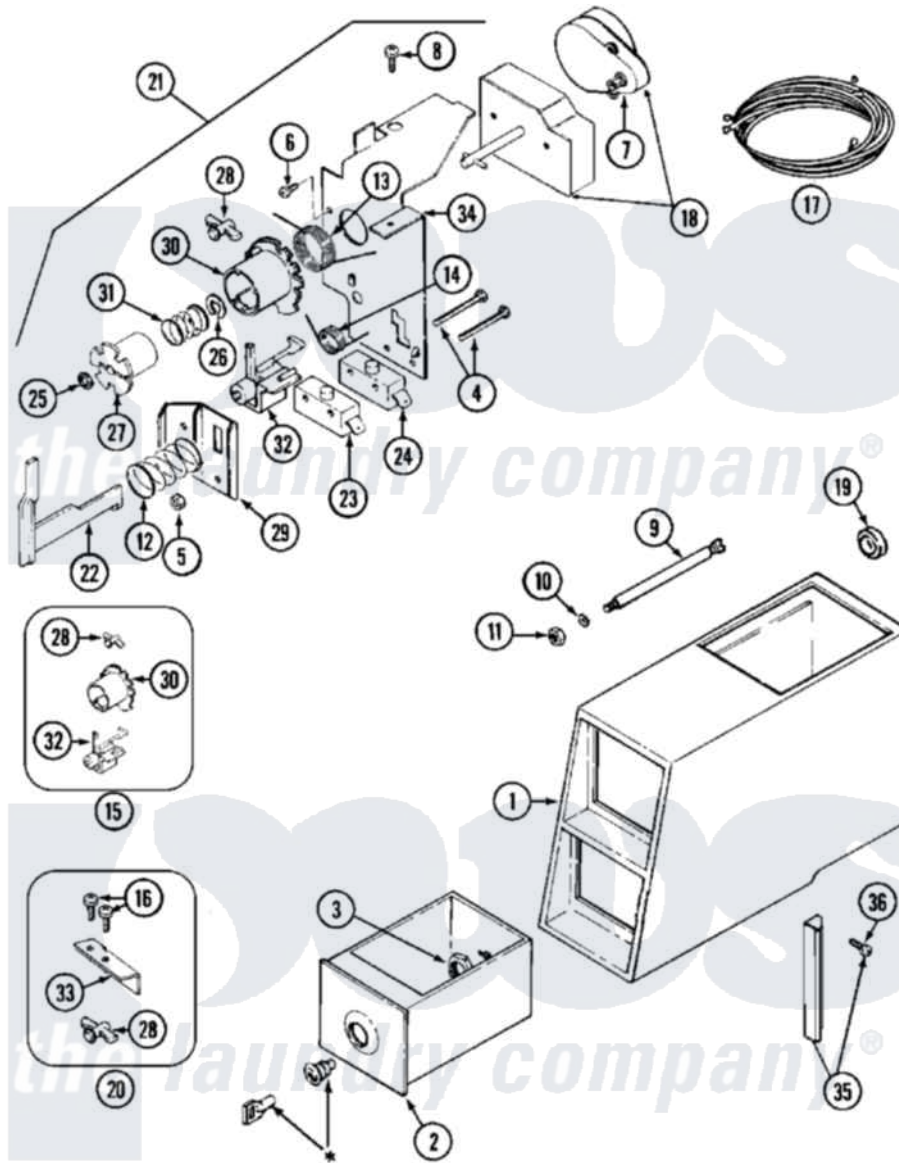


Maytag MDG13CSEGW 02 - CONTROL CENTER



* CONTACT YOUR COMMERCIAL LAUNDRY DISTRIBUTOR

Maytag [Residential Maytag MDG13CSEGW Dryer Parts](#) Parts Diagram 02 - CONTROL CENTER
 Click on the part number to view part

Item	Original Part Number	Replaced By	Status	Part Description
001	Y307081			Coin Meter Weld Assembly
"	NLA		Not Available	(ALM)
002	205423	208883		Coin Box K
"	205423L	208883		Coin Box K
003	212328	W10139762		Hex Nut, 3/4-27
004	315277			Screw
005	Y052634	701719		Nut, Hex
006	910708	488234		Screw 8-32 X 1/4
007	305870			Timer Motor
"	306527	305812		Timer
008	211168	W10139210		Screw, 8-18 X 5/16
009	215559			Bolt, Coin Slide Locking
010	910387			Lockwasher, Vault Assembly
011	Y052721			Nut, Terminal Block Plate
012	NLA		Not Available	SPRING, HELICAL
013	314331			Spring, Torsion Return

014	314332		Spring, Actuator
015	306104		Actuator Switch Kit
016	212707	3196385	Screw
017	305800		Wire Harness For Timer
018	305796		Timer
"	305812		Timer
"	305813		Part Not Available Part Not Used
019	Y313671	33001303	Grommet, Plate Hole
020	Y308109		Slide And Adj. Return Bracket
021	305797		Torsion Timer Assembly Complete
"	305831		Torsion Timer Assembly
"	NLA	Not Available	TIMER TORSION ASSEMBLY
022	314337	33002968	Slider
023	305798	Not Available	BYPASS SWITCH FOR MOTOR
024	Y305799		Bypass Switch For Heater
025	211790		Lock Ring For Timer Shaft
026	Y312270		Clip, Spring Retainer
027	314330	Not Available	DRIVER FOR INDEX WHEEL (NOT INCLUDED W/KIT)
028	314335		Peg, Tine Adjustment
"	314547	Y308109	Slide And Adj. Return Bracket
029	314339		Switch And Slider Bracket
030	314546		Wheel, Index
031	211065		Spring, Index Wheel
032	314548	33002967	Actuator, Switch
033	314334		Bracket For Coin Slide
034	314333		Timer Mounting Bracket
035	NLA	Not Available	STOP, COIN METER
036	Y014872		Screw, Coin Meter Stop -

