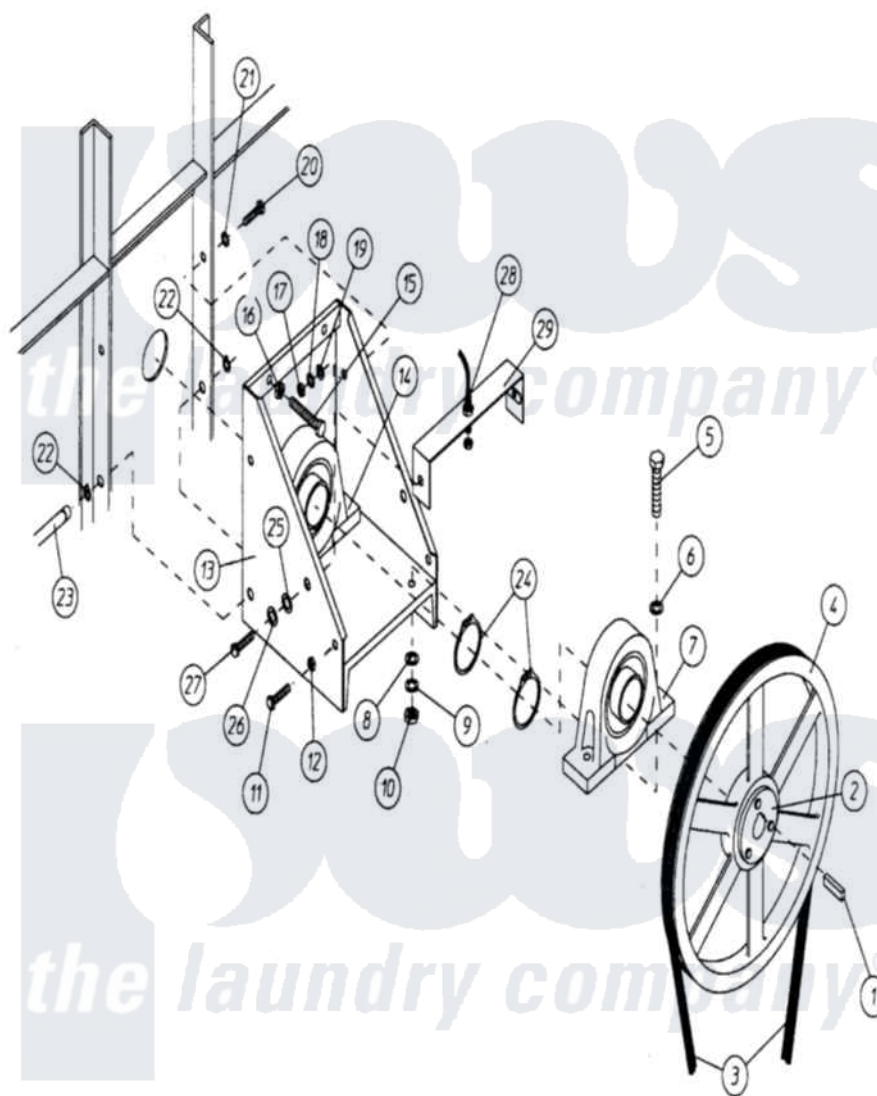


# Maytag MDG170P1HW 10 - TUMBLER BEARING MOUNT ASSEMBLY



Maytag [Residential Maytag MDG170P1HW Dryer Parts](#) Parts Diagram 10 - TUMBLER BEARING MOUNT ASSEMBLY  
 Click on the part number to view part

Item	Original Part Number	Replaced By	Status	Part Description
000	W10124350		Not Available	ORDER PARTS FROM AMERICAN DRYER CORP AT 508-678-9000
001	A100703	<a href="#">100703</a>		1 2 X 1 2
002	A101137	<a href="#">101137</a>		Sf X 2-1 4
003	A100137	<a href="#">W10146573</a>		Ap-91 V-be
004	A101182	<a href="#">101182</a>		2B X 25.0
005	A150602	<a href="#">150602</a>		5 8-11 X 3
006	A153016	<a href="#">153016</a>		5 8 Flat
007	<a href="#">A880223</a>			Bearing, Pillow Block
008	A153016	<a href="#">153016</a>		5 8 Flat
009	A153015	<a href="#">153015</a>		5 8 Split
010	A152010	<a href="#">152010</a>		5 8-11 Hex
011	A150600	<a href="#">150600</a>		3 8-16 X 1
012	A152005	<a href="#">152005</a>		3 8-16 Hex
013	A820910	<a href="#">820910</a>		170 - Tumbler
014	<a href="#">A880223</a>			Bearing, Pillow Block

015	A150603		Not Available	BOLT, MACHINE (SQ.HD.) (1/2-13 X 3" SQ. HD.)
016	A152011	<a href="#">152011</a>		1 2-13 Hex
017	A152005	<a href="#">152005</a>		3 8-16 Hex
018	A153005	<a href="#">153005</a>		3 8 Split
019	A153004	<a href="#">153004</a>		3 8 X 1
020	A150600	<a href="#">150600</a>		3 8-16 X 1
021	A153004	<a href="#">153004</a>		3 8 X 1
022	A100801	<a href="#">100801</a>		5 8 External
023	A332153	<a href="#">332153</a>		170 Hinge
024	A100810	<a href="#">100810</a>		3 1 8 Ext
025	A153018	<a href="#">153018</a>		1 4 Flat
026	A153007	<a href="#">153007</a>		1 4 Split
027	A150512	<a href="#">150512</a>		1 4-20 X 1
028	A824807	<a href="#">824807</a>		Rotational
029	A880841	<a href="#">880841</a>		AD100 120

