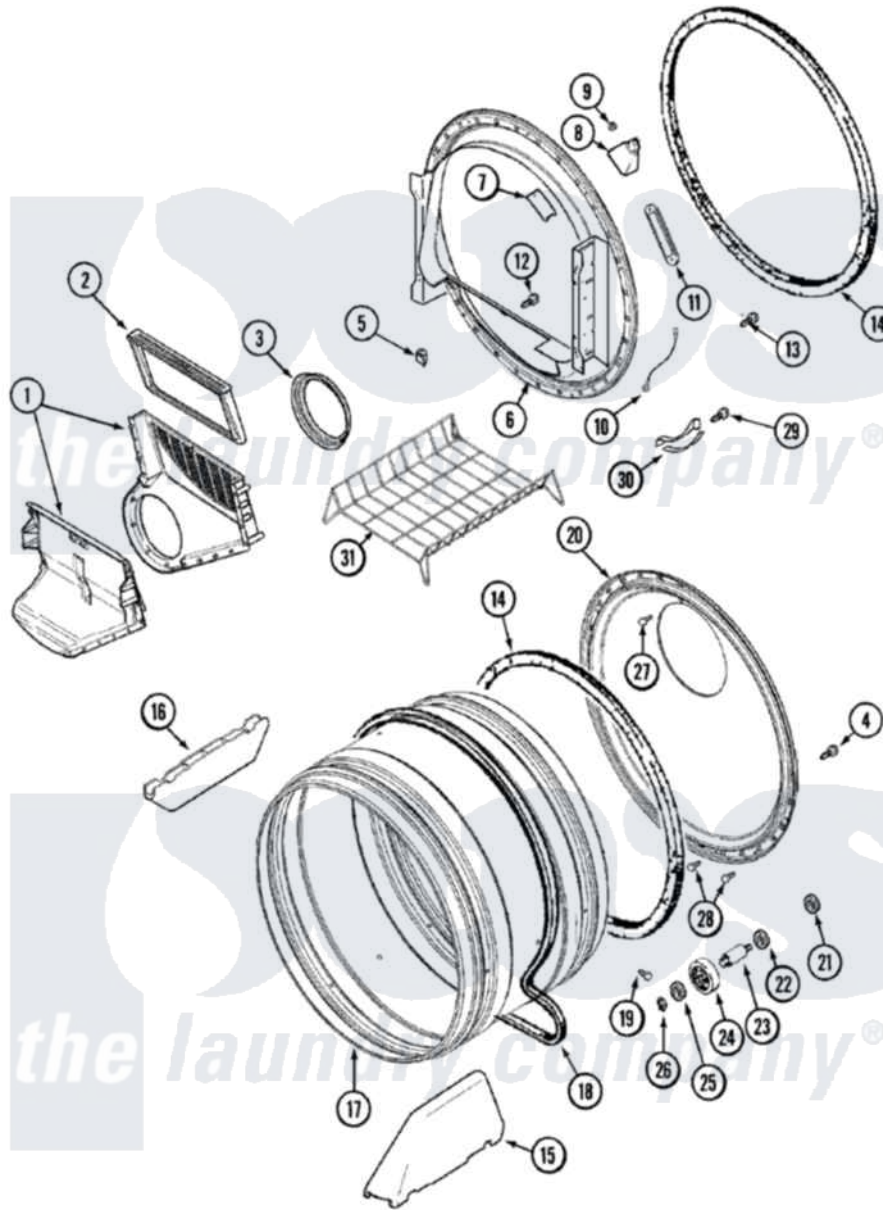


Maytag MDG9520BWQ 07 - TUMBLER



Maytag Residential Maytag MDG9520BWQ Dryer Parts Parts Diagram 07 - TUMBLER
 Click on the part number to view part

| Item | Original Part Number | Replaced By | Status | Part Description |
|------|--------------------------|--------------------------|---------------|--|
| 1 | 33002765 | | Not Available | INLET DUCT ASSEMBLY (GAS) |
| " | 33001799 | | | Outlet Duct Assembly Note: Outlet Duct Assembly |
| 2 | 33001808 | | | Filter, Lint |
| 3 | 33001758 | 33002560 | | Seal, Blower |
| 4 | 33002190 | | | SCrew, C BraCe, BraCket, Cabinet |
| " | 33001903 | | | Front, Tumbler |
| 5 | Y310376 | | | Clip, Door Switch Harness |
| 6 | 33001903 | | | Front, Tumbler |
| 7 | 33001869 | | | Lens, Drum Light |
| " | 33001871 | | | Screw Note: Screw, Drum Light |
| 8 | 33001870 | | Not Available | HOLDER, LAMP (W/HOUSING) NOTE: LAMP (W/HOUSING & HOLDER) |
| " | 22002263 | | | Lamp |
| | | | | Blow, End Cap Note: Nut |

| | | | |
|----|--------------------------|---------------------------|--|
| 9 | 214872 | | Pinnut, End Cap Note. Nut, Lamp Holder |
| 10 | Y303711 | | Sensor Ground Wire |
| " | 211294 | 90767 | Screw, 8A X 3/8 HeX Washer Head Tapping |
| 11 | 33001809 | | Sensor Bar Assembly |
| " | 22001078 | 3177991 | Screw |
| 12 | 312311 | 312311MAY | Screw |
| 13 | 33001855 | 33002917 | Screw, No.10-16 |
| 14 | 33001807 | | Seal, Tumbler |
| 15 | 33001756 | 33002032 | Baffle |
| 16 | 33001755 | | Baffle |
| 17 | 33001889 | | Tumbler |
| 18 | 33001777 | 33002535 | V-Belt |
| 19 | 33001788 | 33002973 | Screw, No.9-15 X 1.00 Hx WS |
| 20 | 33002494 | 33002778 | Power Cord |
| " | 33001801 | | Back, Tumbler |
| 21 | 33001443 | | Nut, Hex |
| 22 | Y313347 | 312535 | Washer, Vault Mounting Brk. |
| 23 | Y312948 | 6-3129480 | Shaft- Tumbler |
| 24 | Y303373 | 12001541 | Drum Roller/Washer Assembly--W |
| 25 | 312535 | | Washer, Vault Mounting Brk. |
| 26 | 410233 | 9703438 | Ring-Retrn |
| 27 | 210932 | | Screw, No.8 X 9/16 Ctsk Note: Screw, Inlet Duct |
| 28 | 22001996 | 3370225 | Screw |
| 29 | 210720 | | Rivet, Bearing To Tumbler Frnt |
| 30 | 306508 | | Tumbler Bearing Kit ----W |
| 31 | 33001917 | 33001917A | Rack- Dryi |

the laundry company[®]

lows
the laundry company[®]