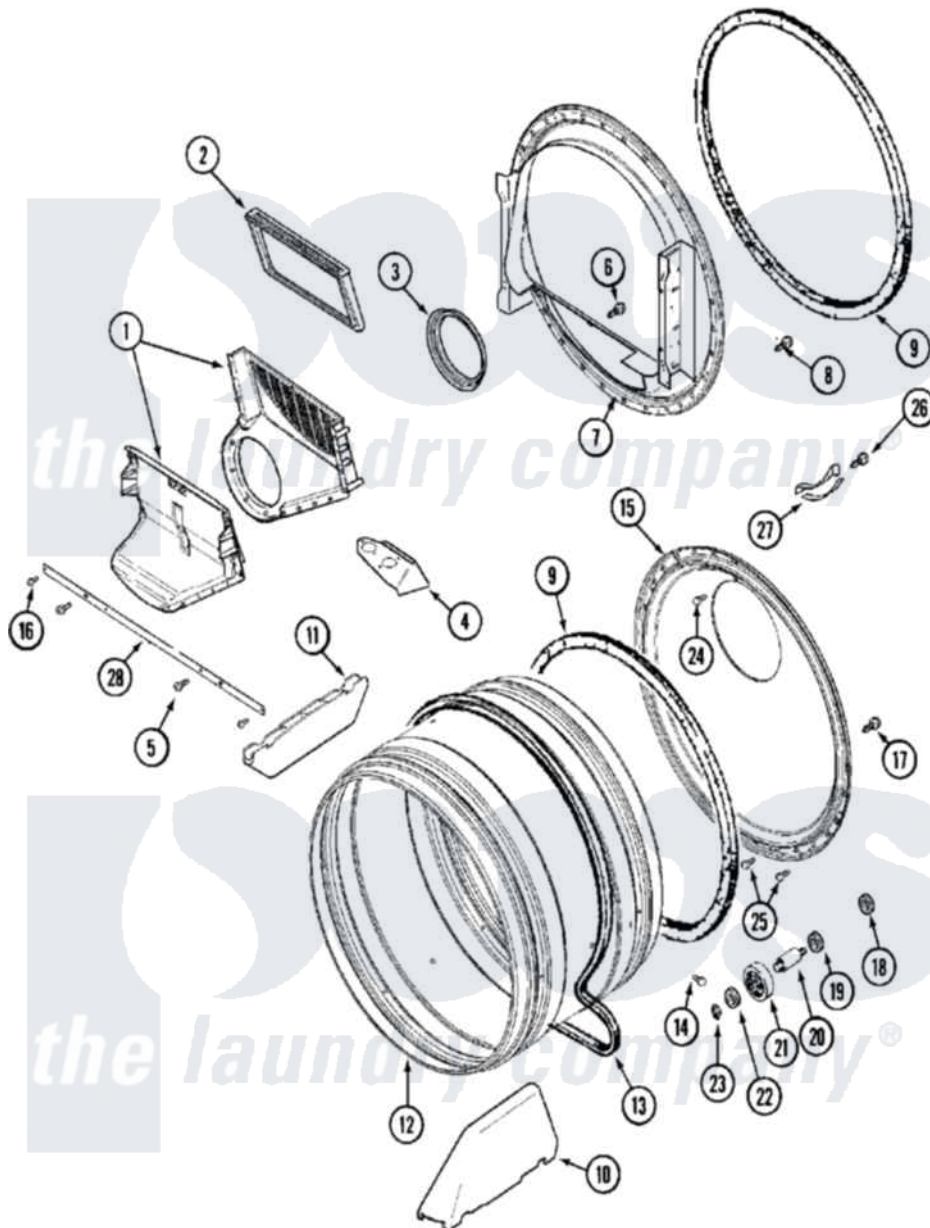


# Maytag MLE23PDAYQ 08 - TUMBLER



Maytag Residential Maytag MLE23PDAYQ Dryer Parts Parts Diagram 08 - TUMBLER  
 Click on the part number to view part

Item	Original Part Number	Replaced By	Status	Part Description
001	<a href="#">33001799</a>			Outlet Duct Assembly Note: Outlet Duct Assembly
002	33001804	<a href="#">33002790</a>		Lint Filter
003	<a href="#">33002560</a>			Seal, Blower
004	<a href="#">33001837</a>			Cover, Thermostat
005	<a href="#">33001768</a>			Screw, Shroud Note: Screw, Shroud And Outlet Duct
006	NLA		Not Available	SCREW, OUTLET DUCT
007	<a href="#">33001802</a>			Front, Tumbler
008	33001855	<a href="#">33002917</a>		Screw, No.10-16
009	<a href="#">33001807</a>			Seal, Tumbler
010	<a href="#">33002032</a>			Baffle
011	<a href="#">33001755</a>			Baffle
012	33001794	<a href="#">33001889</a>		Tumbler
013	<a href="#">33002535</a>			V-Belt
014	33001788	<a href="#">33002973</a>		Screw, No.9-15 X 1.00 Hx WS
015	<a href="#">33001801</a>			Back, Tumbler

016	<a href="#">22001995</a>	Screw Note: Screw, Tumbler Front And Shroud	
017	<a href="#">22001995</a>	Screw Note: Screw, Tumbler Front And Shroud	
018	<a href="#">33001443</a>	Nut, Hex	
019	<a href="#">312535</a>	Washer, Vault Mounting Brk.	
020	Y312948	<a href="#">6-3129480</a>	Shaft- Tumbler
021	Y303373	<a href="#">12001541</a>	Drum Roller/Washer Assembly--W
022	<a href="#">312535</a>	Washer, Vault Mounting Brk.	
023	410233	<a href="#">9703438</a>	Ring-Retr
024	<a href="#">210932</a>	Screw, No.8 X 9/16 Ctsk Note: Screw, Inlet Duct	
025	22001996	<a href="#">3370225</a>	Screw
026	<a href="#">210720</a>	Rivet, Bearing To Tumbler Frnt	
027	<a href="#">306508</a>	Tumbler Bearing Kit ---W	
028	<a href="#">33002039</a>	Brace, Tumbler Front	

