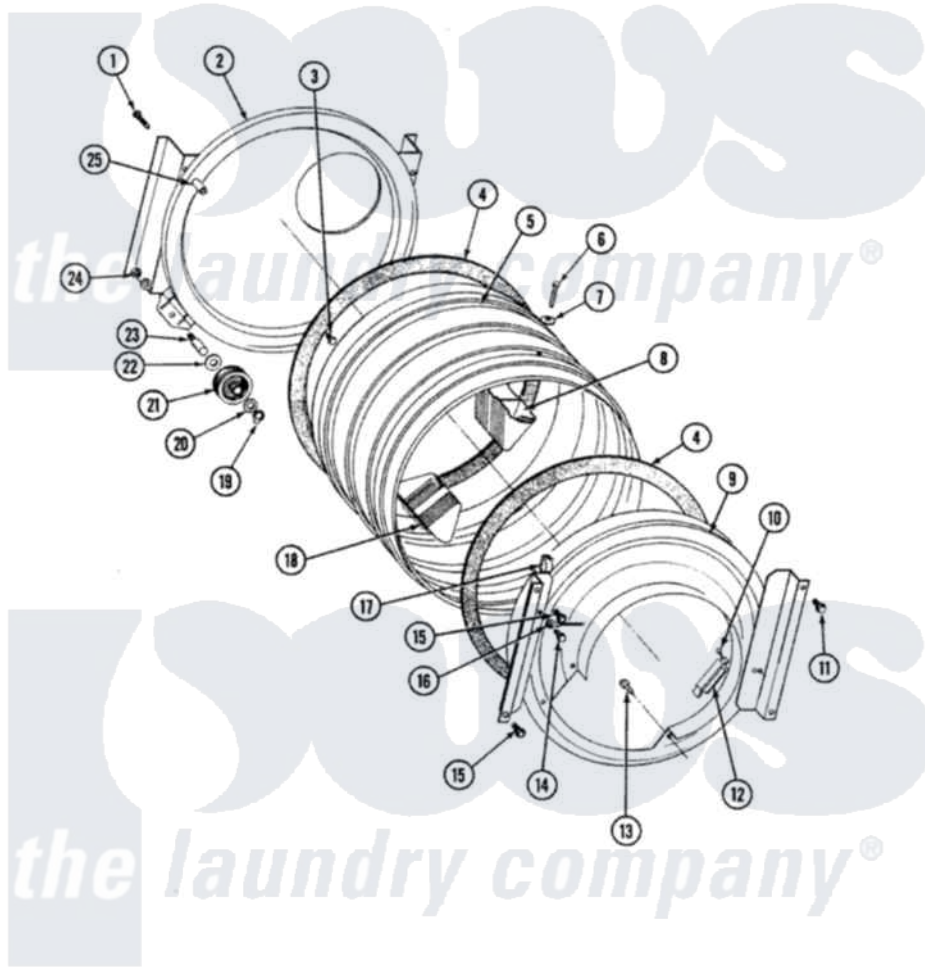


Maytag SE7800 17 - TUMBLER (FRONT & BACK)

SECTION: TUMBLER, TUMBLER FRONT & TUMBLER BACK

MODEL: SE7800 S67800



Issue Date: 12/90

12

Maytag [Residential Maytag SE7800 Stacked Washer and Dryer Parts](#) Parts Diagram 17 - TUMBLER (FRONT & BACK)

[Click on the part number to view part](#)

Item	Original Part Number	Replaced By	Status	Part Description
1	313764		Not Available	SCREW
2	Y306660	33001106		Back, Tumbler
3	211294	90767		Screw, 8A X 3/8 HeX Washer Head Tapping
4	314820			Seal, Tumbler
5	Y306664	33001177		Tumbler
6	Y310759			Screw, Tumbler Baffles
7	314158			Washer, Baffle To Tumbler
8	314807		Not Available	TUMBLER BAFFLE - TALL
9	306670		Not Available	TUMBLER FRONT----NA
10	210720			Rivet, Bearing To Tumbler Frmt
11	Y313561			Screw----NA
12	306508			Tumbler Bearing Kit ---W
13	Y314110	33002917		Screw, No.10-16
14	211294	90767		Screw, 8A X 3/8 HeX Washer Head Tapping
15	310362		Not Available	SCREW-TUMBLER FRONT TO

15	310302	Not Available	CABINET
16	901220		Ground Wire
17	Y310376		Clip, Door Switch Harness
18	314806	Not Available	TUMBLER BAFFLE - SHORT
19	410233	9703438	Ring-Retr
20	312535		Washer, Vault Mounting Brk.
21	Y303373	12001541	Drum Roller/Washer Assembly--W
22	Y313347	312535	Washer, Vault Mounting Brk.
23	Y312948	6-3129480	Shaft- Tumbler
24	312538	33001443	Nut, Hex
25	313915	31-3915	Tech Sheet

Howes
the laundry company®

Howes
the laundry company®

Howes
the laundry company®