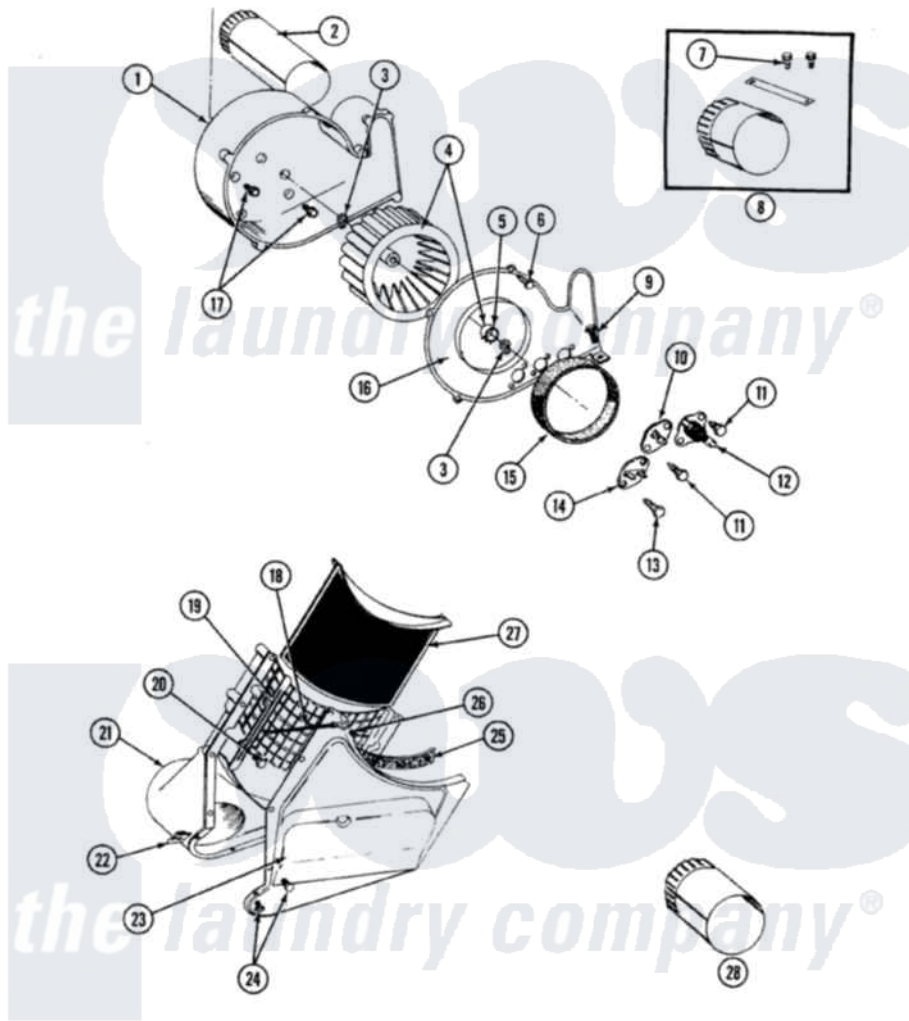


# Maytag SG1000 02 - BLOWER HOUSING/THERMOSTATS & LINT SCREEN

SECTION: BLOWER HOUSING, THERMOSTATS & LINT SCREEN  
 MODEL: SE-SG1000

P/N 56287R1



Issue Date: 5/91

16

Maytag Residential Maytag SG1000 Stacked Washer and Dryer Parts Parts Diagram 02 - BLOWER HOUSING/THERMOSTATS & LINT SCREEN  
 Click on the part number to view part

Item	Original Part Number	Replaced By	Status	Part Description
1	<a href="#">Y312893</a>			Housing, Blower
2	306064		Not Available	EXHAUST DUCT
"	<a href="#">314716</a>			Retainer Clip
3	410233	<a href="#">9703438</a>		Ring-Retrn
4	<a href="#">Y303836</a>			Blower Wheel Assembly And Clamp
5	<a href="#">312967</a>			Clamp, Blower Housing
6	Y312961	<a href="#">W10116751</a>		Screw
7	Y310632	<a href="#">1163839</a>		Screw
8	306643	<a href="#">8544761A</a>		Exten-Exht
9	<a href="#">Y313561</a>			Screw----NA
10	<a href="#">306056</a>			Thermistor Temp. Control Part Not Used Mde/G26pc Only.
11	211294	<a href="#">90767</a>		Screw, 8A X 3/8 HeX Washer Head Tapping
12	306060		Not Available	THERMOSTAT
13	314848	<a href="#">W10116760</a>		Screw

14	<a href="#">306604</a>		Cut-Off, Thermal Part Not Used
15	<a href="#">Y312901</a>		Seal, Housing Cover
16	Y313770		COVER FOR BLOWER HOUSING
17	Y310632	<a href="#">1163839</a>	Screw
18	<a href="#">901220</a>		Ground Wire
19	<a href="#">Y313795</a>		Guide For Lint Screen
20	Y312961	<a href="#">W10116751</a>	Screw
21	306658		Not Available
"	<a href="#">314801</a>		Outlet Duct And Grid
22	315274	<a href="#">488660</a>	Nut, Speed
"	<a href="#">214894</a>		Fastener, End Cap
23	<a href="#">314485</a>		Outlet Duct And Grid
24	Y312961	<a href="#">W10116751</a>	Screw
25	<a href="#">Y313796</a>		Lint Seal
26	<a href="#">310557</a>		Washer
"	Y312961	<a href="#">W10116751</a>	Screw
27	Y306666	<a href="#">33001003</a>	Screen, Lint
28	<a href="#">306637</a>		Exhaust Duct Assembly

