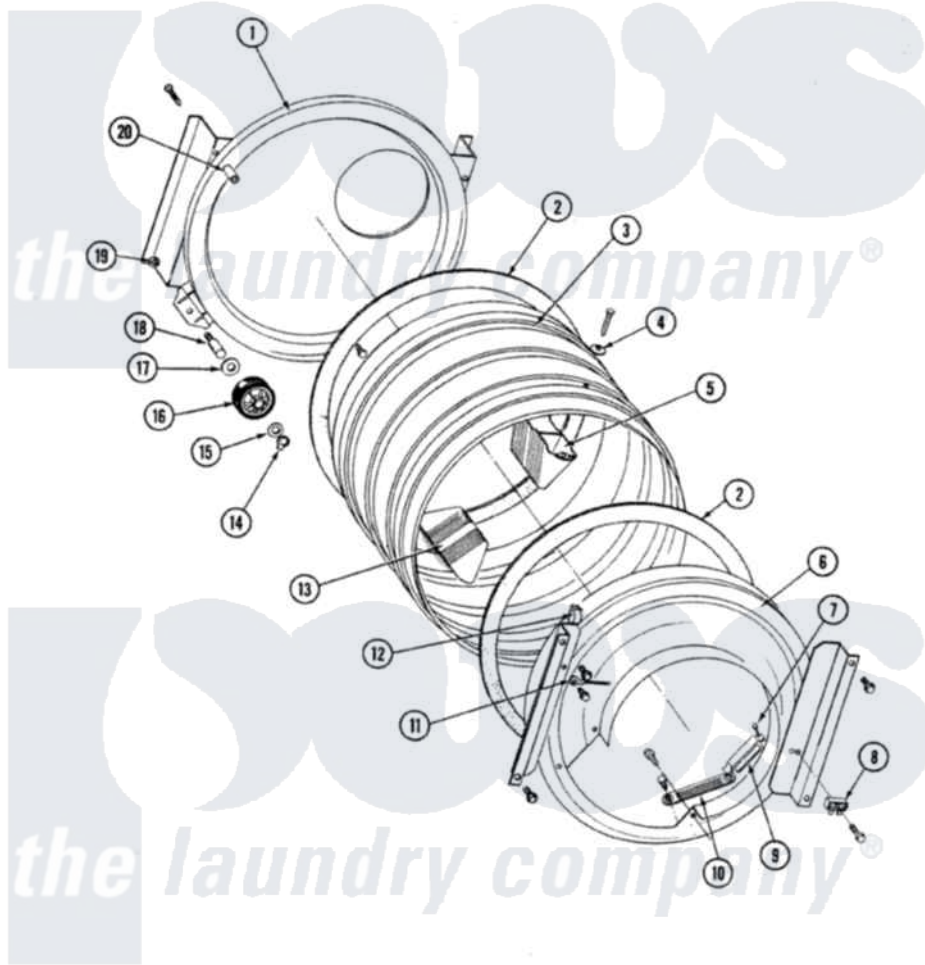


Maytag SG1000 19 - TUMBLER (FRONT & BACK)

SECTION: TUMBLER, TUMBLER FRONT & TUMBLER BACK
 MODEL: SE-SG1000

P/N 56287R1



Issue Date: 5/91

12

Maytag [Residential Maytag SG1000 Stacked Washer and Dryer Parts](#) Parts Diagram 19 - TUMBLER (FRONT & BACK)
 Click on the part number to view part

Item	Original Part Number	Replaced By	Status	Part Description
1	313764		Not Available	SCREW
"	211294	90767		Screw, 8A X 3/8 HeX Washer Head Tapping
2	314820			Seal, Tumbler
"	313764		Not Available	SCREW
"	Y313541	33313541		Seal- Tumbler
3	314469		Not Available	TUMBLER
"	Y310759			Screw, Tumbler Baffles
"	Y306664	33001177		Tumbler
"	314805	33001177		Tumbler
4	314158			Washer, Baffle To Tumbler
5	Y310759			Screw, Tumbler Baffles
"	314807		Not Available	TUMBLER BAFFLE - TALL
"	314468		Not Available	BAFFLE - TALL
6	306366	306710		Tumbler Front Assembly
"	306710			Tumbler Front Assembly
"	Y310632	1163839		Screw

"	Y313561		Screw---NA
"	Y314110	33002917	Screw, No.10-16
7	210720		Rivet, Bearing To Tumbler Fmt
8	314554	Not Available	SCREW
"	306130		Spark Gap Assembly
9	306508		Tumbler Bearing Kit ---W
10	Y251119	3177991	Screw
"	304997		Sensor Assembly With Screws
11	901220		Ground Wire
"	211294	90767	Screw, 8A X 3/8 HeX Washer Head Tapping
12	Y310376		Clip, Door Switch Harness
13	314467	Not Available	BAFFLE - REGULAR
"	Y310759		Screw, Tumbler Baffles
"	314806	Not Available	TUMBLER BAFFLE - SHORT
14	410233	9703438	Ring-Retrn
15	312535		Washer, Vault Mounting Brk.
16	Y303373	12001541	Drum Roller/Washer Assembly--W
17	Y313347	312535	Washer, Vault Mounting Brk.
18	Y312948	6-3129480	Shaft- Tumbler
19	312538	33001443	Nut, Hex
20	313915	31-3915	Tech Sheet

