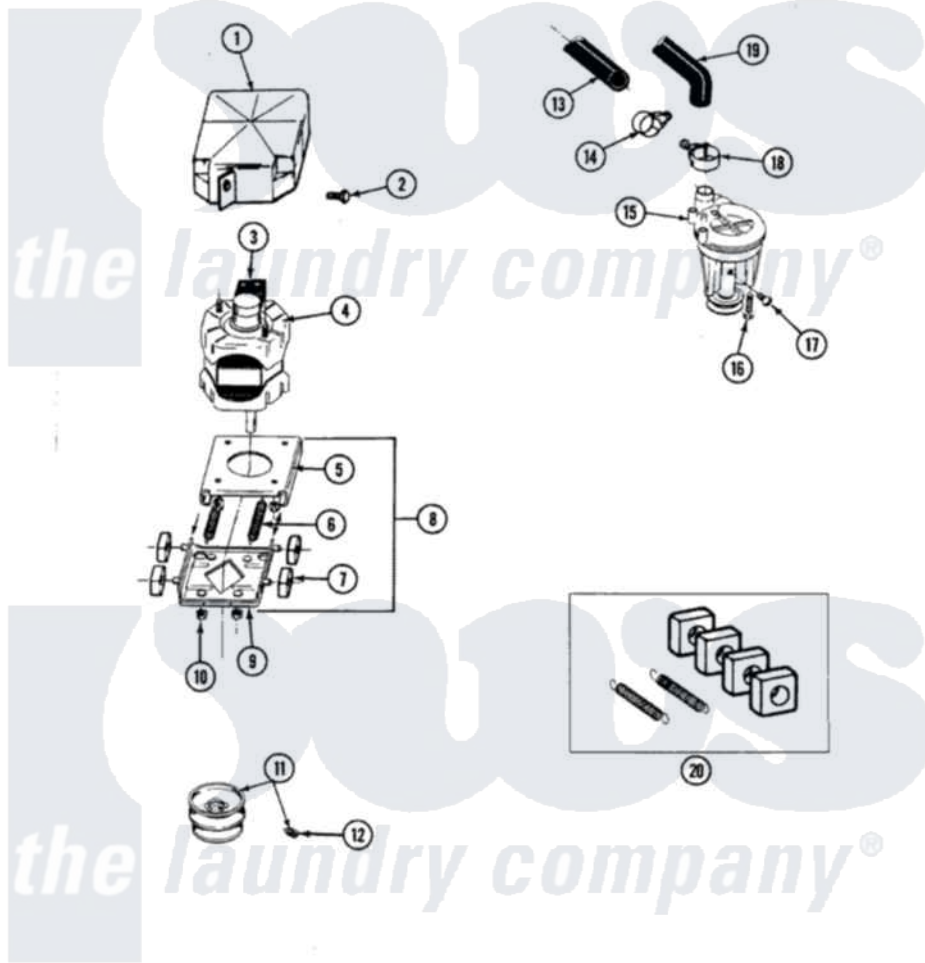


Maytag SG7800 13 - MOTOR & PUMP ASSEMBLY

SECTION: MOTOR & PUMP ASSEMBLY
 MODEL: SE7800 SG7800



Issue Date: 12/90

36

Maytag Residential Maytag SG7800 Stacked Washer and Dryer Parts Parts Diagram 13 - MOTOR & PUMP ASSEMBLY
 Click on the part number to view part

Item	Original Part Number	Replaced By	Status	Part Description
1	215098			Shield, Motor
2	213121	3400111		Screw, 12-14 X 5/8
3	205133		Not Available	(PROD. IDNo. 2-1664-8 & 2-5463)
"	205132		Not Available	SWITCH, MOTOR EXTERNAL START No.201664-14,205463-4 & 201800-4
"	206505		Not Available	PROD. No.201664-15, & No.205463-3.
4	201805	12002351		Motor-Drive
5	214956			Motor Mount Assembly
6	202718			Springs, Tension
7	204998	205000		Roller And Spring Kit 4+Spr
8	205999			Motor Mount Assembly
9	205908			Motor Mount Assembly
10	Y311426	3400029		Nut, Adapter Plate
11	200816	6-2008160		Pulley- MO
12	Y053241			Set Screw, Motor Pulley

13	215365	22001448	Hose, Pump
14	200461	285655	Clamp, Hose
15	202203	6-2022030	Pump As Pa
16	211880		Screw, HeX Head No.10 X 1/2 Inc
17	Y015408	22003235	Screw, Bearing Insert
18	202574	3367052	Clamp, Hose
19	Y212989		Hose, Outer Tub To Pump
20	205000		Roller And Spring Kit 4+Spr

