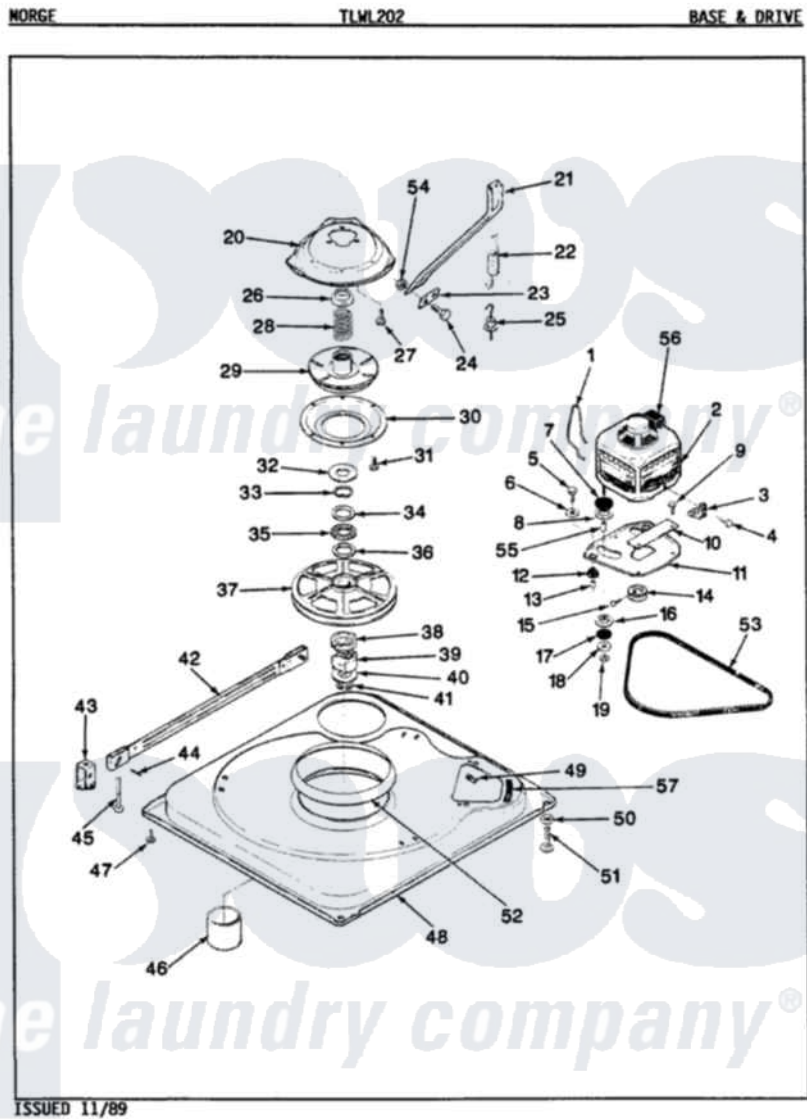


Norge TLWL202A 01 - BASE & DRIVE



Norge Residential Norge TLWL202A Washer Parts Parts Diagram 01 - BASE & DRIVE
 Click on the part number to view part

| Item | Original Part Number | Replaced By | Status | Part Description |
|------|-------------------------|---------------------------|---------------|---------------------------|
| 1 | 35-0235 | | | Spring, Motor Pivot |
| 2 | 35-2030 | | Not Available | MOTOR |
| " | LA-2002 | | Not Available | MOTOR KIT |
| 3 | 33-9945 | | | Slide, Foot |
| 4 | 25-7418 | 33001178 | | Back, Tumbler |
| 5 | 25-7833 | 21001977 | | Screw |
| 6 | 25-7834 | | | Washer, Motor/Base Screw |
| 7 | 33-9946 | | | Isolator, Motor |
| 8 | 33-9944 | 35-3570 | | Washer, Motor Pivot |
| 9 | 25-3083 | 212951 | | Screw, No.6-32 X 1/4 Inch |
| 10 | 33-9947 | | Not Available | DBL.PIVOT SLIDE |
| 11 | 35-2021 | 21001783 | | Plate And Screw Assembly |
| 12 | 33-9941 | 35-3646 | | Isolator, Motor Plate |
| 13 | 25-7831 | | | Spacer, Mounting |
| 14 | 35-2124 | W10143344 | | Pulley |
| 15 | 25-7117 | | | Set Screw |

| | | | | |
|----|-------------------------|--------------------------|---------------|-------------------------------|
| 16 | 33-9943 | 35-3571 | | Slide, Motor Pivot |
| 17 | 33-9967 | | | Washer, Motor Isolator |
| 18 | 25-7047 | | | Washer, Flat |
| 19 | 25-7325 | Y707702 | | Locknut |
| 20 | 35-2015 | | Not Available | SUSPENSION HOUSING |
| 21 | 35-2024 | | | Brace, Tub |
| 22 | 35-2092 | | Not Available | SUSPENSION SPRING |
| 23 | 35-2025 | | Not Available | PLATE, REINFORCEMENT |
| 24 | 25-7912 | | | Screw |
| 25 | 25-7365 | | | Eye Bolt |
| 26 | 35-2017 | | | Retainer, Brake Spring |
| 27 | 25-7895 | 21001858 | | Screw 5/16-18 x 1/2 |
| 28 | 35-2112 | 21001910 | | Spring, Brake |
| 29 | 35-2113 | 35-6714 | | Brake Roto |
| 30 | 35-2018 | 35-6918 | | Stator, Brake |
| 31 | 25-7359 | | | Screw |
| 32 | 35-2016 | | Not Available | SPACER-BEARING |
| 33 | 25-7909 | | | Washer |
| 34 | 35-2318 | | Not Available | WASHER |
| 35 | 35-2078 | 12002213 | | Thrust Bearing Kit |
| 36 | 35-2081 | 35-3456 | | Washer |
| 37 | 35-2119 | 12002213 | | Thrust Bearing Kit |
| 38 | 35-2441 | 12002213 | | Thrust Bearing Kit |
| 39 | 35-2439 | 12002213 | | Thrust Bearing Kit |
| 40 | 35-2082 | | | Washer, 1.25ODX.530IDX.062 |
| 41 | 25-7854 | | | Ring, Retaining |
| 42 | 35-2049 | 21001881 | | Bar, Stabilizer |
| 43 | 35-2046 | | | Bracket, Stabilizer |
| 44 | 35-2052 | | | Pin, Stabilizer |
| 45 | 35-2050 | 22004469 | | Leg And Foot Self Stabalizing |
| 46 | 35-2007 | | | Cap, Dust |
| 47 | 25-7828 | 489483 | | Screw 10-32 X 1/2 |
| 48 | 35-2019 | | Not Available | BASE, WASHER |
| 49 | 25-7838 | 25-7845 | | Speednut, Motor |
| 50 | 25-7915 | | | Hex Nut |
| 51 | 35-0772 | 25001119 | | Foot And Pad Assembly |
| 52 | 35-2357 | 21002026 | | Snubber |
| 53 | 35-2320 | 21352320 | | Belt, Drive |
| 54 | 25-0226 | | Not Available | HEX NUT |
| 55 | 25-7830 | | | Spacer |
| 56 | 33-9765 | | | Switch, Motor |
| " | 25-7413 | | Not Available | FLAT WASHER |
| " | 35-2039 | | Not Available | PAD, FOOT |
| 57 | 35-2065 | | | Pad, Motor Plate |