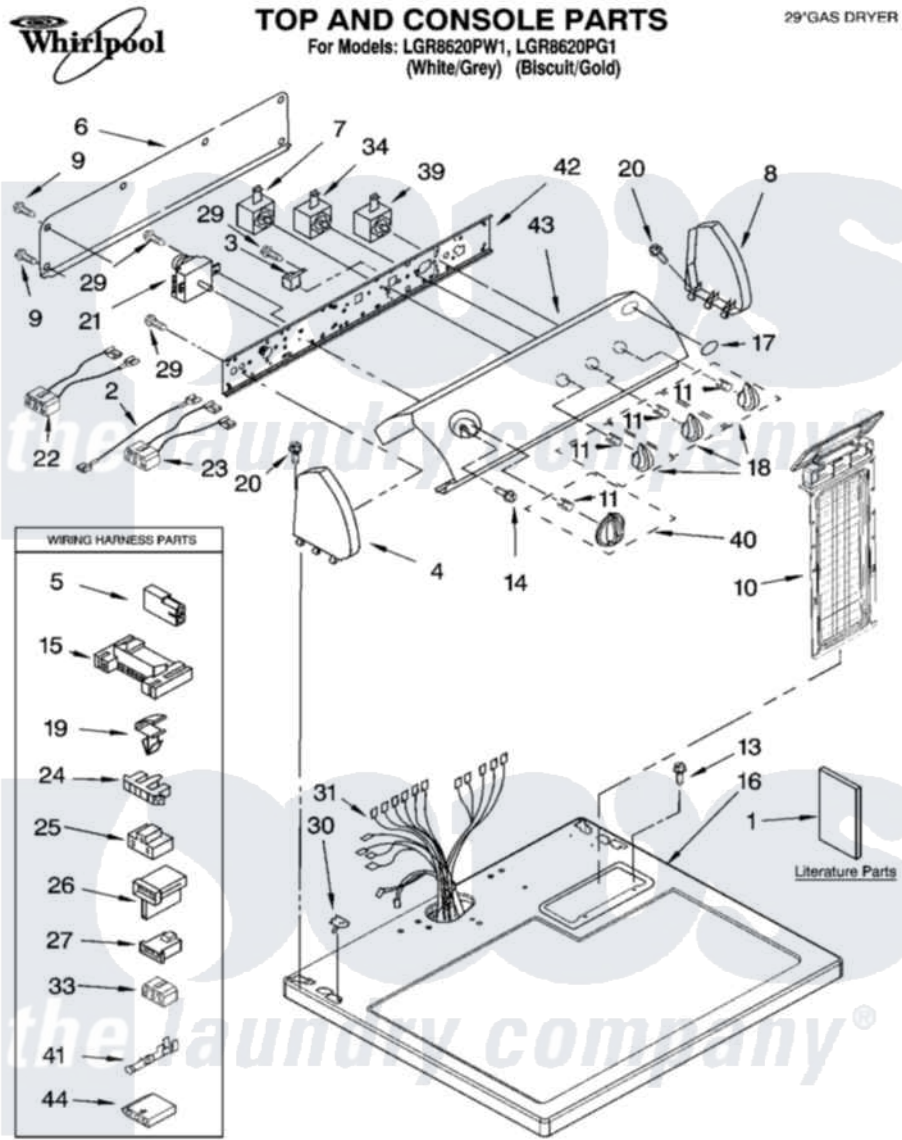


# Whirlpool LGR8620PW1 01 - TOP AND CONSOLE PARTS



10-05 Litho in U.S.A.(LT)

1

Part No. 8160898

Whirlpool Residential Whirlpool LGR8620PW1 Dryer Parts Parts Diagram 01 - TOP AND CONSOLE PARTS

[Click on the part number to view part](#)

| Item | Original Part Number    | Replaced By            | Status        | Part Description   |
|------|-------------------------|------------------------|---------------|--|
| 1    | 8562582                 |                        | Not Available | Instructions, Installation                                     |
| "    | 8533770                 |                        | Not Available | Sheet, Cycle Feature   |
| "    | 8578183                 |                        | Not Available | Use And Care Guide   |
| "    | 3979703                 |                        | Not Available | Wiring Diagram   |
| "    | N/A                     |                        | Not Available | Following May Be Purchased<br>DO-IT-YOURSELF REPAIR<br>MANUALS |
| "    | 677818                  |                        | Not Available | Manual, Do-It- Yourself Repair<br>(Dryer)                      |
| 2    | <a href="#">3401684</a> |                        |               | Jumper, Wire   |
| 3    | <a href="#">694419</a>  |                        |               | Mini-Buzzer  |
| 4    | 8271365                 | <a href="#">279962</a> |               | Endcap   |
| "    | 8271368                 | <a href="#">279965</a> |               | Endcap   |
| 5    | <a href="#">717252</a>  |                        |               | Receptacle, Terminal   |
| 6    | <a href="#">8274261</a> |                        |               | Do-It-Yourself Repair Manuals                                  |
| 7    | <a href="#">3399639</a> |                        |               | Switch, Rotary Temperature                                     |
| 8    | 8271359                 | <a href="#">279962</a> |               | Endcap   |

|    |                         |                         |   |
|----|-------------------------|-------------------------|---|
| "  | 8271362                 | <a href="#">279965</a>  | Endcap                                  |
| 9  | <a href="#">693995</a>  |                         | Screw, Hex Head                         |
| 10 | <a href="#">8557857</a> |                         | Screen, Lint                            |
| "  | <a href="#">8557858</a> |                         | Screen, Lint                            |
| 11 | <a href="#">8536939</a> |                         | Clip, Knob                              |
| 13 | 688983                  | <a href="#">487240</a>  | Screw, For Mtg. Service Capacitor       |
| 14 | 8533951                 | <a href="#">3400859</a> | Screw, Grounding                        |
| 15 | <a href="#">3395683</a> |                         | Receptacle, Multi-Terminal              |
| 16 | 8557930                 | <a href="#">8563985</a> | Top                                     |
| "  | 8557931                 | <a href="#">8563986</a> | Top                                     |
| 17 | <a href="#">3400985</a> |                         | Medallion                               |
| 18 | <a href="#">8544937</a> |                         | Knob, Control                           |
| "  | <a href="#">8544938</a> |                         | Knob, Control                           |
| 19 | <a href="#">3394427</a> |                         | Clip-Harness                            |
| 20 | <a href="#">388326</a>  |                         | Screw, 8-18 X 1.25                      |
| 21 | <a href="#">8299766</a> |                         | Timer Assembly                          |
| 22 | <a href="#">3397695</a> |                         | Wire, Jumper                            |
| 23 | 3396029                 | <a href="#">8539893</a> | Wire, Jumper                            |
| 24 | <a href="#">3397269</a> |                         | Connector, Timer                        |
| 25 | <a href="#">3401144</a> |                         | Connector                               |
| 26 | <a href="#">3403499</a> |                         | Connector, 2-Position                   |
| 27 | <a href="#">3403498</a> |                         | Connector, 3-Position                   |
| 29 | 8533971                 | <a href="#">90767</a>   | Screw, 8A X 3/8 HeX Washer Head Tapping |
| 30 | <a href="#">357213</a>  |                         | Nut, Push-In                            |
| 31 | <a href="#">8299879</a> |                         | Harness, Wiring                         |
| 33 | <a href="#">3347243</a> |                         | Block, Disconnect                       |
| 34 | <a href="#">3405156</a> |                         | Switch, Rotary                          |
| 39 | <a href="#">3398095</a> |                         | Switch, Push-To-Start                   |
| 40 | <a href="#">8544957</a> |                         | Timer Knob Assembly                     |
| "  | <a href="#">8544958</a> |                         | Timer Knob Assembly                     |
| 41 | <a href="#">94614</a>   |                         | Terminal                                |
| 42 | <a href="#">8544895</a> |                         | Bracket, Control                        |
| 43 | <a href="#">8545979</a> |                         | Panel, Control                          |
| "  | <a href="#">8545980</a> |                         | Panel, Control                          |
| 44 | <a href="#">3936144</a> |                         | Do-It-Yourself Repair Manuals           |

