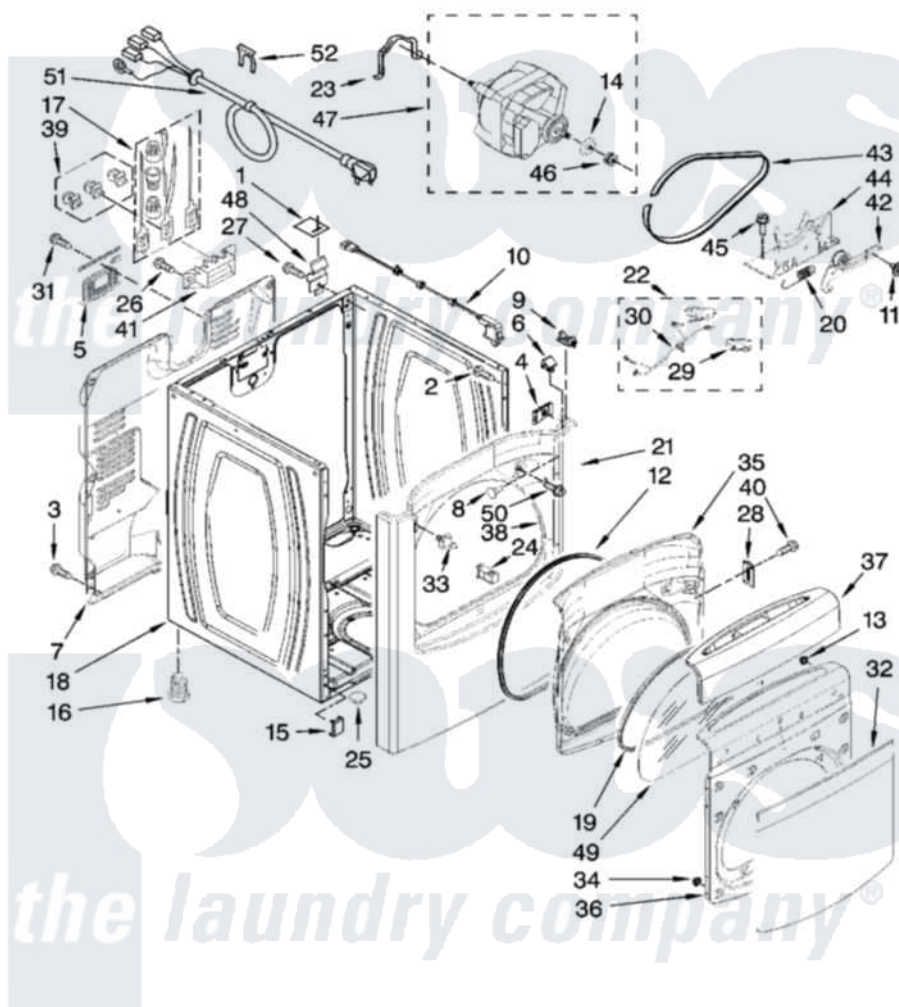


Whirlpool YWED6400SW1 02 - CABINET PARTS

CABINET PARTS

For Model: YWED6400SW1
(White)



W10123001

3

Whirlpool [Residential Whirlpool YWED6400SW1 Dryer Parts](#) Parts Diagram 02 - CABINET PARTS

[Click on the part number to view part](#)

Item	Original Part Number	Replaced By	Status	Part Description
1	18849			Pad, Top Hinge
2	343641	681414		Screw, 10AB X 1/2
3	693995			Screw, Hex Head
4	W10007520			Clip, Ground
5	W10110241			Cover, Terminal Block
6	8576625			Lock, Front Top
7	8558830		Not Available	Panel, Rear
8	3404413			Plug, Hinge Hole
9	8568303			Locator, Snap Down
10	3978977	W10201787		Switch-Dor
11	3389420			Retainer-Idler 1/4-20 X 1/16
12	8575027	W10239307		Seal-Door
13	342055	488627		Screw
14	8578538			Restrainer, Belt
15	3394083			Clip, Front Panel
16	3392100	49621		Feet-Leveling

"	279810		Foot-Optional
17	279318		Terminal Tinned And Brass Panel
18	8557569	8563672	Cabinet
19	W10076060		Gasket, Inner Door
20	3387374		Spring, Idler
21	8565029	W10328862	Panel
22	8566208		Assembly, Switch
23	660658		Clamp, Motor Mounting 343481 685441
24	8572982	W10111905	Assembly, Door Catch
25	8578560		Hole, Plug
26	3393008	308685	Side Trim)
27	3390631		Screw, 10-16 X 3/8
28	8565018		Assembly, Hinge And Pin
29	8564011		Bracket-Switch
30	8539897		Jumper,
31	8533974	4331106	Screw, No.10-32 X 7/16
32	8575030		Window, Outer Door
33	8572983	W10295405	Strike
34	308499		Nut-1/4 Hf Self-Thread
35	8565037		Door Inner
36	W10116925		Door, Outer
37	W10111246	W10119087	Handle
38	W10044490		Seal, Front Panel
39	279393		Terminal Block Screw Kit
40	342055	488627	Screw
41	3397659		Block, Terminal
42	8547174		Idler And Pulley Assembly
43	8547168		Belt, Drive
44	8547166		Base, Motor
45	W10002600		Screw, 6-20 X 1 1/4
46	8578565		Pulley, 60 Hz
47	8566152	W10463866	Motor-Drve
48	238088	8066217	Hinge, Top
49	8565015		Glass, Inner Door
50	W10100830		Screw, 10-16 X 3/64
51	8529008	Not Available	HARNES, WIRING
52	694415		Clip, Strain Relief

the laundry company[®]