

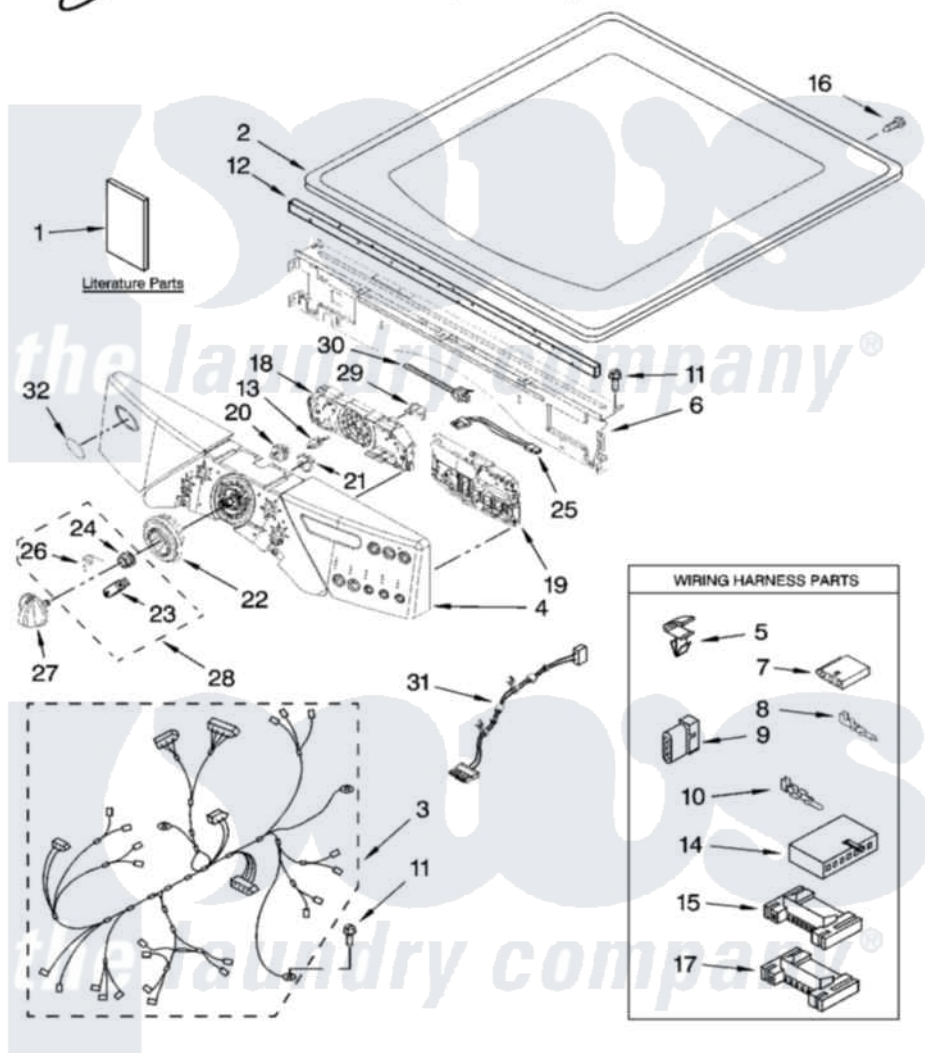
Whirlpool YWED9300VU0 01 - TOP AND CONSOLE PARTS



TOP AND CONSOLE PARTS

For Models: YWED9300VU0
(Ultimate Silver)

ELECTRIC DRYER



8-08 Litho in U.S.A.(LT)(bay)

1

Part No. W10221758 Rev. A

Whirlpool Residential Whirlpool YWED9300VU0 Dryer Parts Parts Diagram 01 - TOP AND CONSOLE PARTS

[Click on the part number to view part](#)

| Item | Original Part Number | Replaced By | Status | Part Description |
|------|---------------------------|---------------------------|---------------|---------------------------------|
| 1 | W10182360 | | Not Available | Use & Care Guide |
| " | W10177461 | | Not Available | Tech Sheet |
| " | W10134980 | | Not Available | Installation, Diagonostic Guide |
| " | W10111226 | | Not Available | Guide, Quick Start |
| 2 | W10114785 | | | Top |
| 3 | W10111013 | | Not Available | Harness, Main |
| 4 | W10187557 | | | Panel, Console |
| 5 | 3394427 | | | Clip-Harness |
| 6 | W10215656 | | | Bracket, Console |
| 7 | 353424 | | | Plug, Terminal |
| 8 | 94614 | | | Terminal |
| 9 | 3936144 | | | Do-It-Yourself Repair Manuals |
| 10 | 94613 | 596797 | | Terminal |
| 11 | 3390647 | 488729 | | Screw |
| 12 | W10112267 | | | Foam-Seal Control Bracket |
| 13 | W10030070 | W10012480 | | Kit |

| | | | |
|----|---------------------------|---------------------------|-----------------------------|
| 14 | 3936150 | | Connector, 7-Circuit |
| 15 | 3395683 | | Receptacle, Multi-Terminal |
| 16 | 98139 | 303776 | Screw |
| 17 | 2203186 | | Connector, 5-Circuit |
| 18 | W10031410 | | User Interface |
| 19 | W10172191 | W10294579 | Kit |
| 20 | W10012430 | | Encoder, Wheel Kit. |
| 21 | W10012440 | | Retainer-Snap |
| 22 | W10012410 | | Knob, Light Ring |
| 23 | W10012810 | 280230 | Encoder, Wheel Kit. |
| 24 | W10012450 | 280230 | Encoder, Wheel Kit. |
| 25 | W10095960 | | Harness, Communication |
| 26 | W10012820 | 280230 | Encoder, Wheel Kit. |
| 27 | W10116704 | | Knob, Control |
| 28 | 280230 | | Encoder, Wheel Kit. |
| 29 | W10112268 | | Clip-Harness |
| 30 | 3391018 | | Tie Cable |
| 31 | W10111020 | | Power Cable, User-Interface |
| 32 | W10117943 | 8303811 | Badge, Assembly |

